

Enduro

METALS CORP

May 2025

A Premier Canadian Copper/Gold Explorer
Burn Copper Gold Project BC

Disclaimer

The information contained herein, while obtained from sources which we believe are reliable, is not guaranteed as to its accuracy or completeness. The company is an exploration stage mineral resource exploration company and none of its mineral projects have yet to be proven to be economic. The contents of this presentation is for information purposes only and does not constitute an offer to sell or a solicitation to purchase any securities referred to herein.

Forward-looking Statements

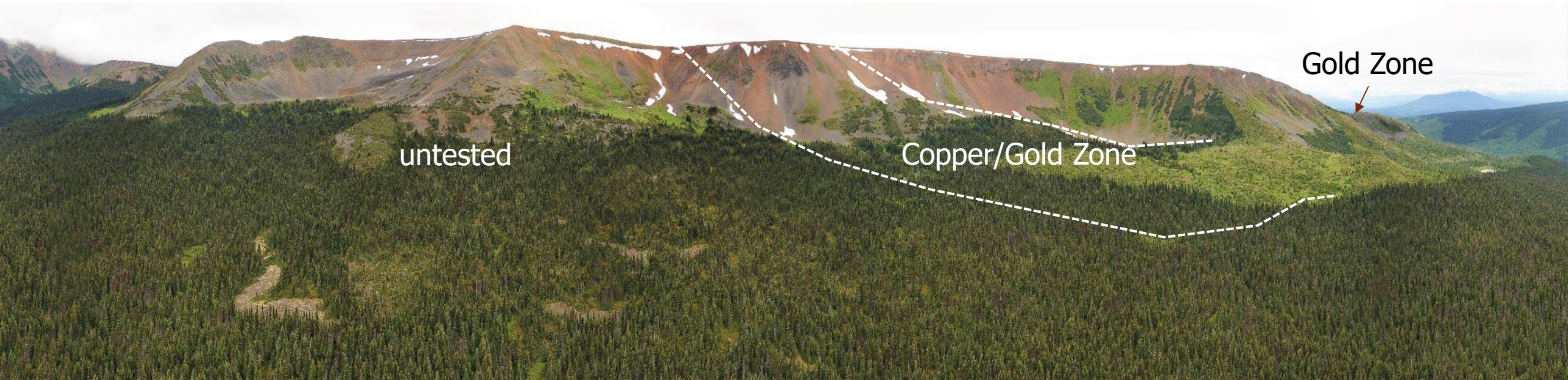
This presentation includes certain forward-looking statements about future events and/or financial results which are forward-looking in nature and subject to risks and uncertainties. Forward-looking statements include without limitation, statements regarding the company's plans, goals or objectives and future exploration, development, potential mineralization, exploration results and future plans and objectives of Commander. Forward-looking statements can generally be identified by the use of forward-looking terminology such as "may", "will", "expect", "intend", "estimate", "anticipate", "believe", or "continue" or the negative thereof or variations thereon or similar terminology. There can be no assurance that such statements will prove to be accurate and actual results and future events could differ materially from those anticipated in such statements. Important factors that could cause actual results to differ materially from expectations include risks associated with mining generally and exploration stage projects in particular. Potential investors should conduct their own investigations as to the suitability of investing in securities of Commander.

Data Verification

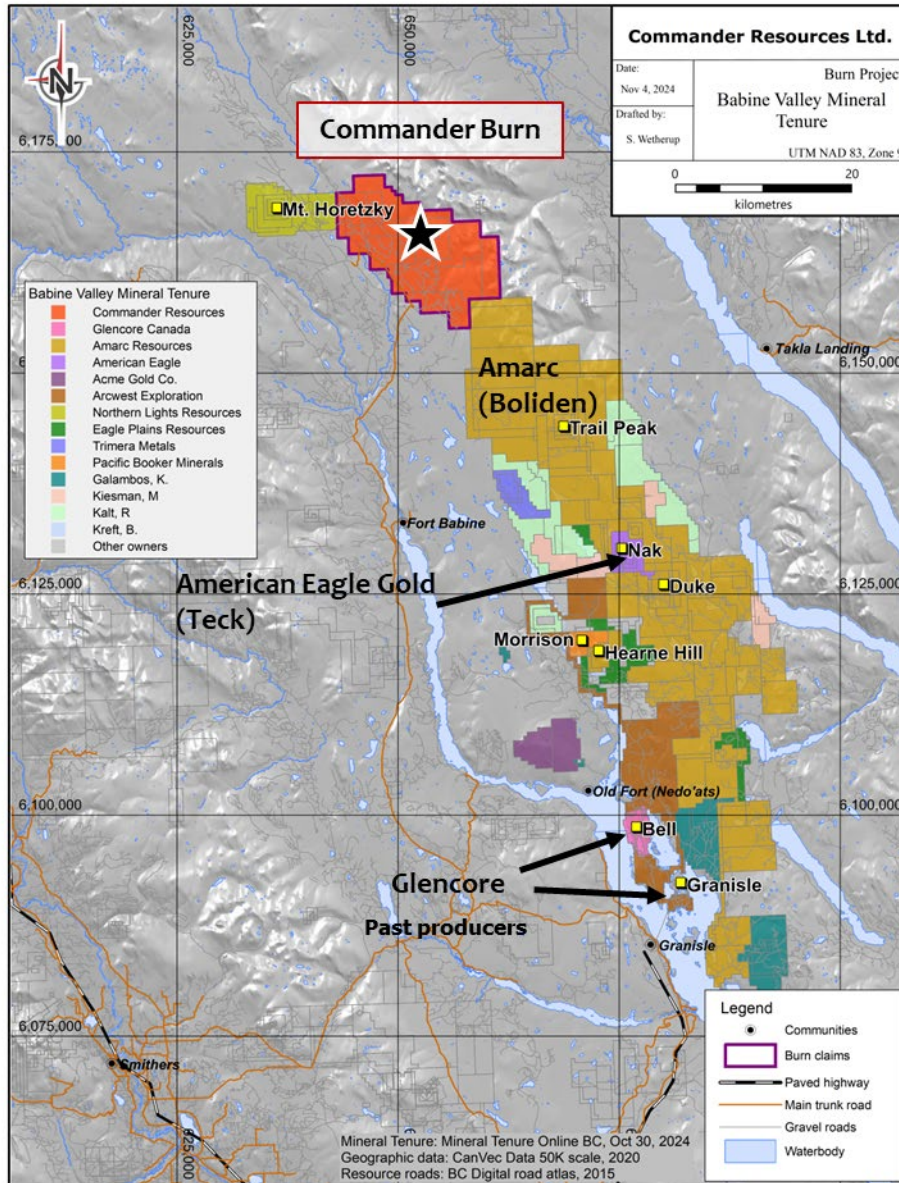
Detailed data verification statements are located at the end of the presentation as well as within individual project slides or posted on the Company's website.

**Robert Cameron, P.Ge., is the Qualified Person responsible
for the technical content of this presentation**

BURN COPPER-GOLD PROJECT: CHARLESTON ZONE **Enduro**



- 170 sq-km property in the Babine Porphyry Belt, central BC
- Grassroots drill discovery in 2022, No prior historical drilling or geophysics
- Gold Zone: 149.5 m @ 0.66 g/t Au
 - Incl. 83.5 m @ 1.08 g/t Au
- Copper Zone: 50 m @ 0.24% Cu Eq



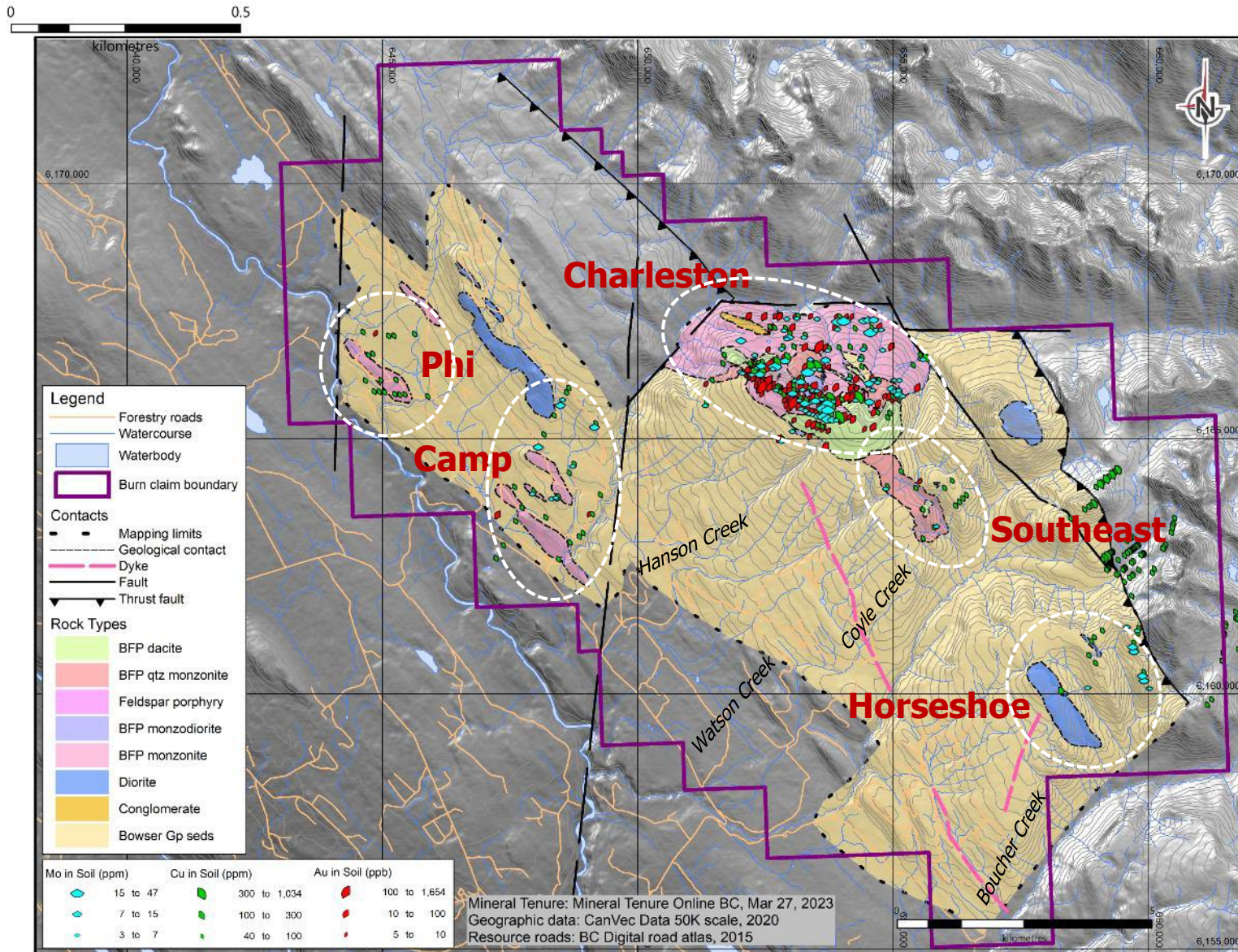
Grassroots Discovery in an Established Copper District

- 170 sq km property in the central BC Babine Copper Belt
- 5,916 metres drilled in 2022 and 2023, 14 holes
- Two distinct discoveries:
 - **Porphyry Cu-Au Zone: 50 m @ 0.24% Cu eq within a 134 m interval**
 - **Gold Zone: 149.5 m @ 0.66 g/t Au**
- Largely un-explored

Data verification and QA/QC: see company press release dated March 6, 2023 and January 19, 2024

*CuEq.: Copper equivalent is calculated using metals prices (\$US) of \$3.50/ lb for Cu, \$1750/oz for Au and \$20/lb for Ag and assumed net metal recoveries of 85% for Cu, 72% for Au and 65% for Ag summarized in the following formula. $CuEq \% = Cu\% + ((Au\ g/t * (Au\ recovery / Cu\ recovery) * (Au\ \$\ per\ oz / 31.1034768) / (Cu\ \$\ per\ lb * 22.05)) + ((Ag\ g/t * (Ag\ recovery / Cu\ recovery) * (Ag\ \$\ per\ oz / 31.103) / (Cu\ \$\ per\ lb * 22.05)))$. Metal prices are not economic parameters and are used solely for determining relative weighting factors in CuEq calculations. Recoveries are arbitrary and informed from peer company practice and documented metallurgical studies of similar nearby deposits. No metallurgical work has been completed at Burn.*

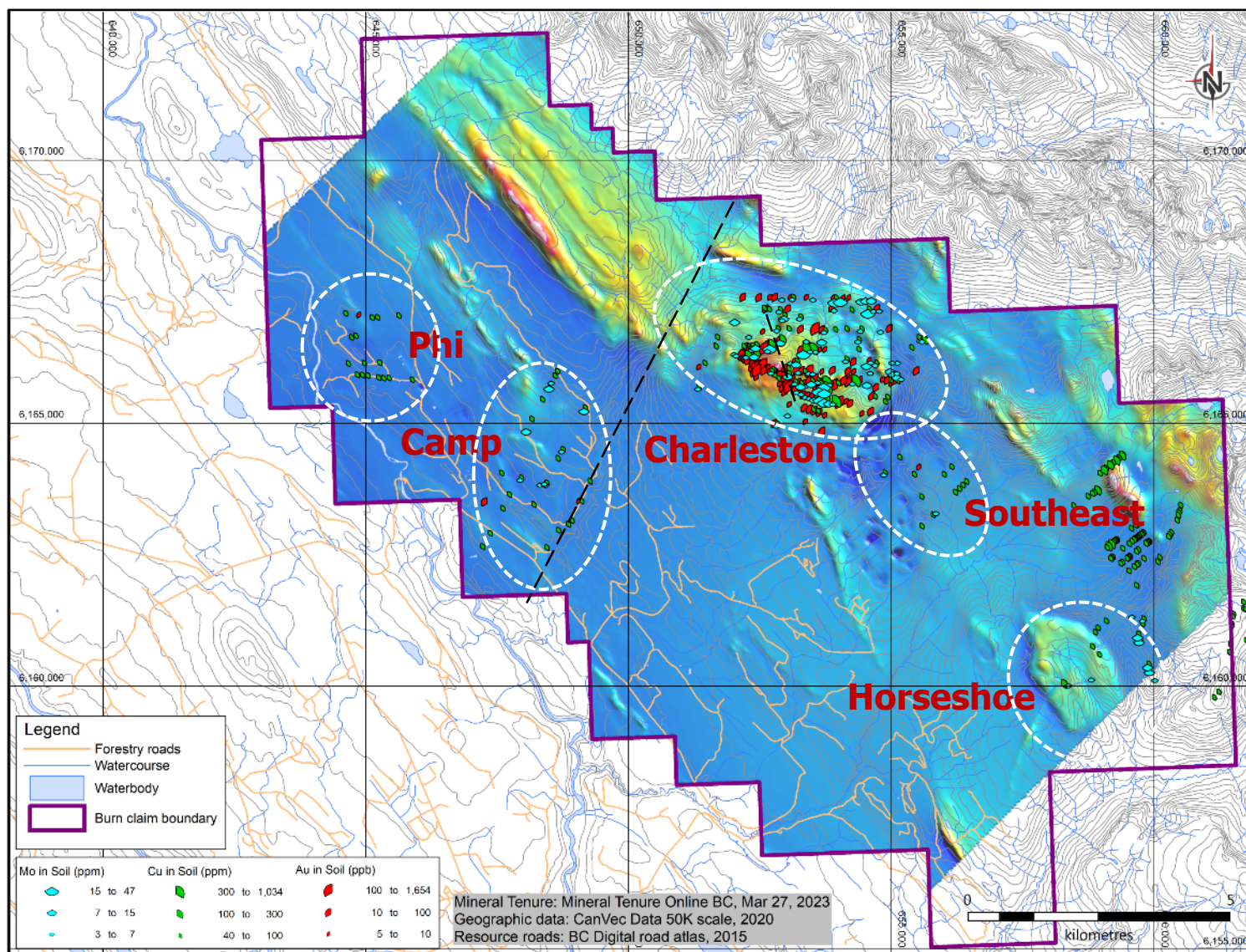
BURN: PROPERTY GEOLOGY & PORPHYRY TARGETS **Enduro**



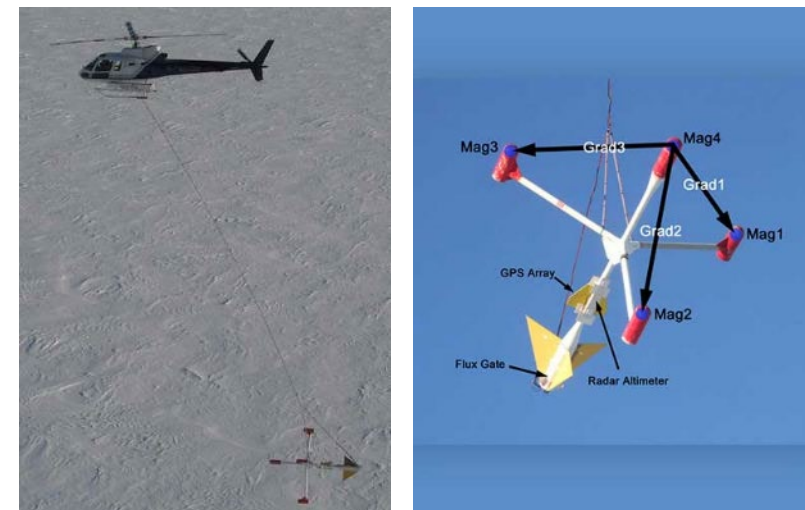
- Babine Igneous Suite intrusions (biotite feldspar porphyry, "BFP") and sub-varieties intruding Cretaceous sediments and coeval volcanics
- pervasive cover and poor exposure except at higher elevations
- Extensive logging

BURN: 2024 AIRBORNE MAGNETIC SURVEY

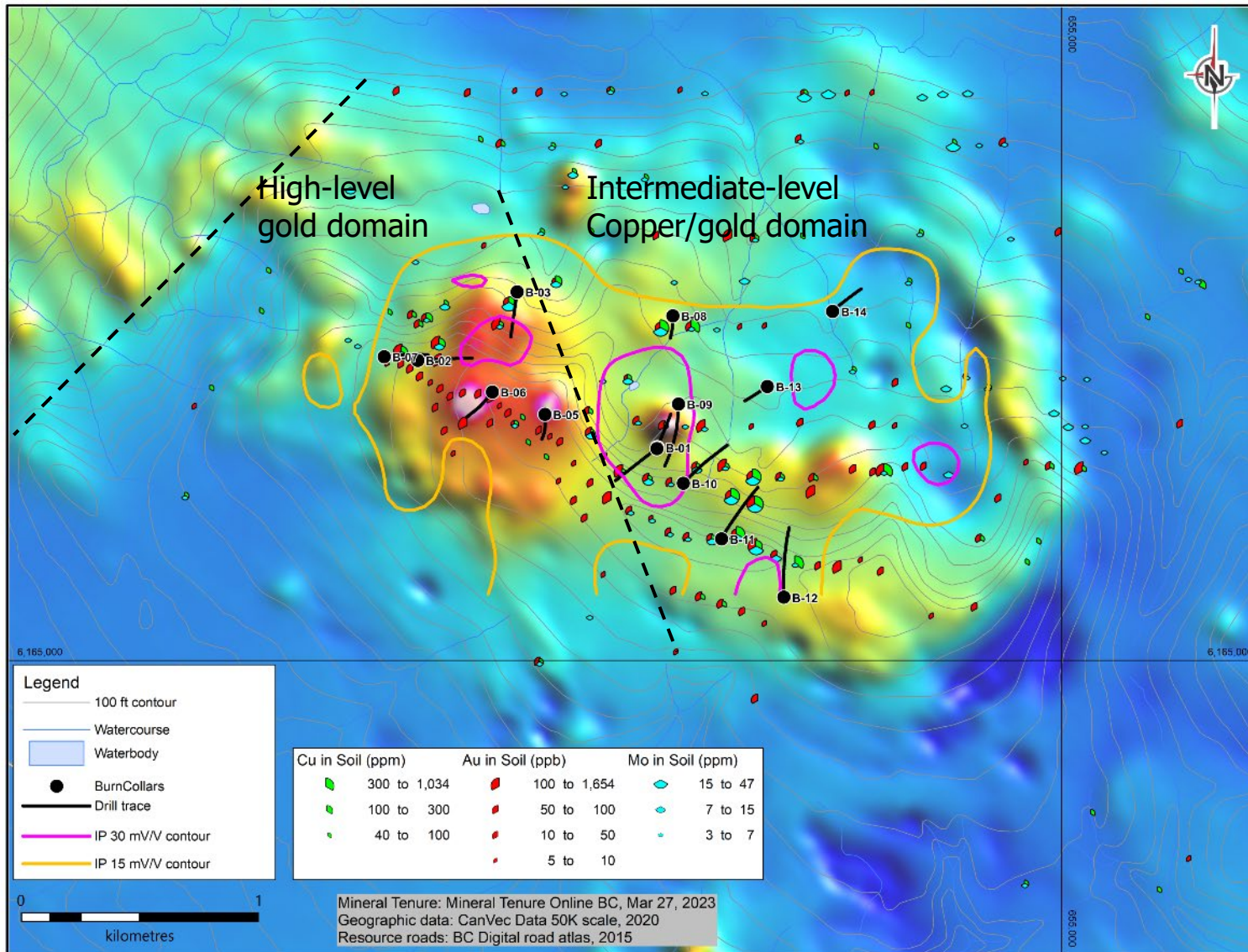
Enduro



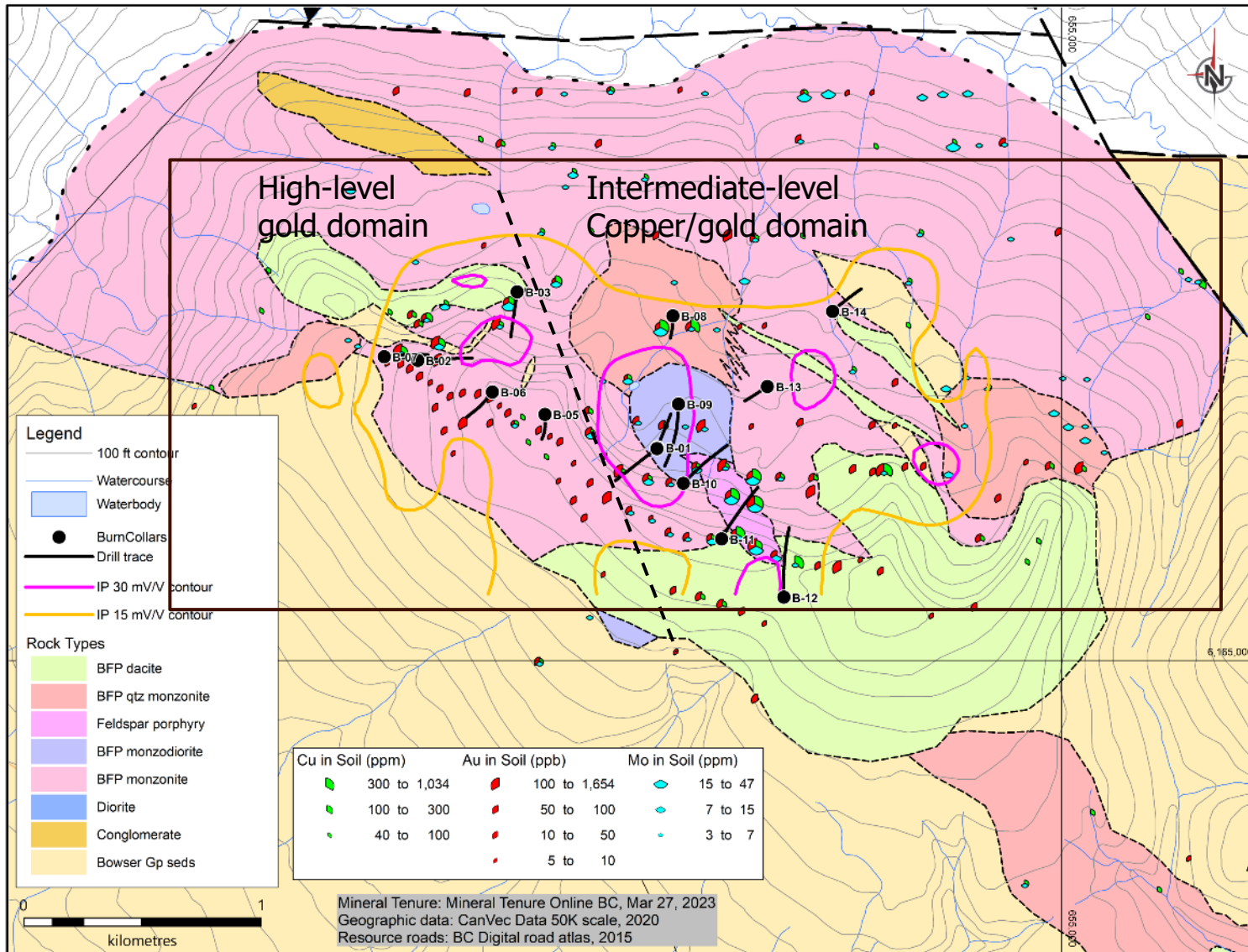
- 1.875 km survey @100 m spacing
- previous survey at 200 m spacing
- SHA Geophysics Heli-GT system
- magnetic gradiometer system in a towed bird
- Higher Resolution
- Low noise
- Vertical and Measured gradient



CHARLESTON TARGET DETAIL: TMI



- 5,916 metres drilled to date, 14 holes
- Area tested includes a large, exposed, quartz-magnetite stockwork zone, a chargeability (induced polarization) anomaly (single line) and a zone of elevated gold in soils
- Hole B-01 returned 50 m @ 0.11% Cu and 0.20 g/t Au within a 130 m interval
- Hole B-02 returned 149.5 m @ 0.66 g/t Au including 83.5 m @ 1.08 g/t Au
- Drilling to date tested a variety of targets and two zones of interest are indicated.
 - A gold-rich western zone and a central copper/gold zone
 - All observations including chemistry, geology and clays indicate the upper levels of a gold-rich porphyry copper deposit.



High-level gold domain

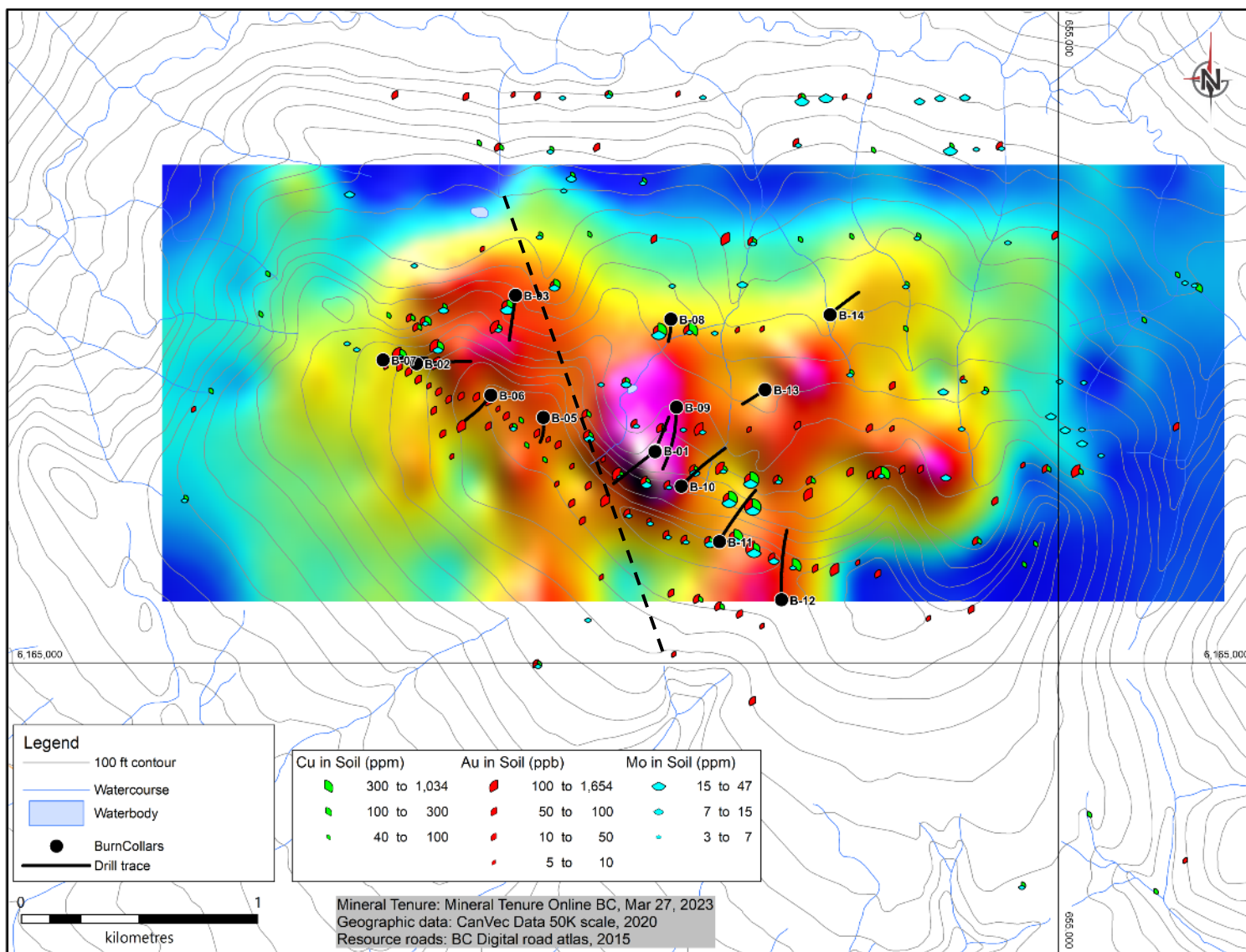
- BFP dykes, volcanics, siltston
- Low temp clay and sericite
- Iron carbonate
- Pyrite, pyrrhotite and chalcopryite at depth
- Zinc rich

Intermediate-level copper/gold domain

- BFP and intrusion breccia, siltstone
- Sericite (phengite)
- Quartz magnetite stockwork
- Chalcopryite, trace molybdenite diss and veins
- Chalcopryite, magnetite breccia filling
- Late vanadium zeolite with gold

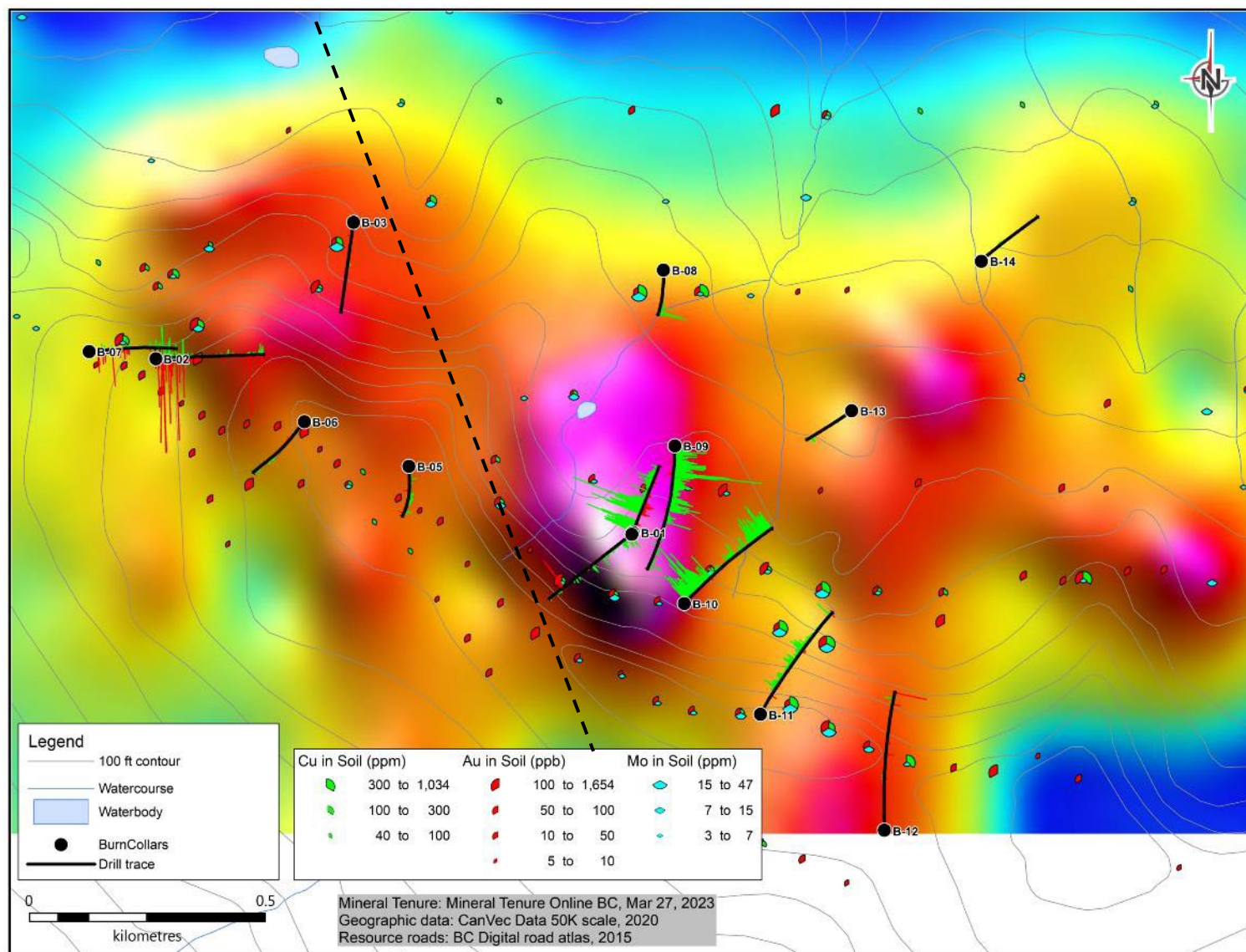
CHARLESTON TARGET: CHARGEABILITY,

@ 100 m depth slice

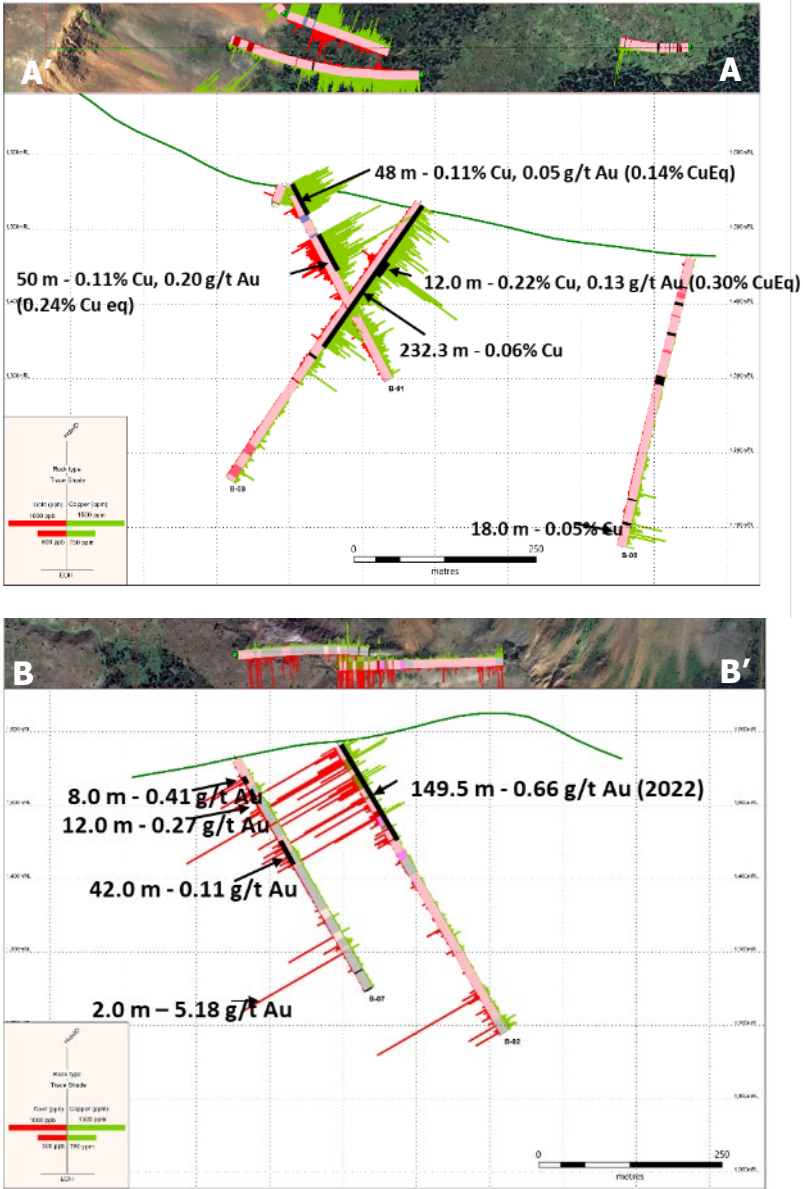
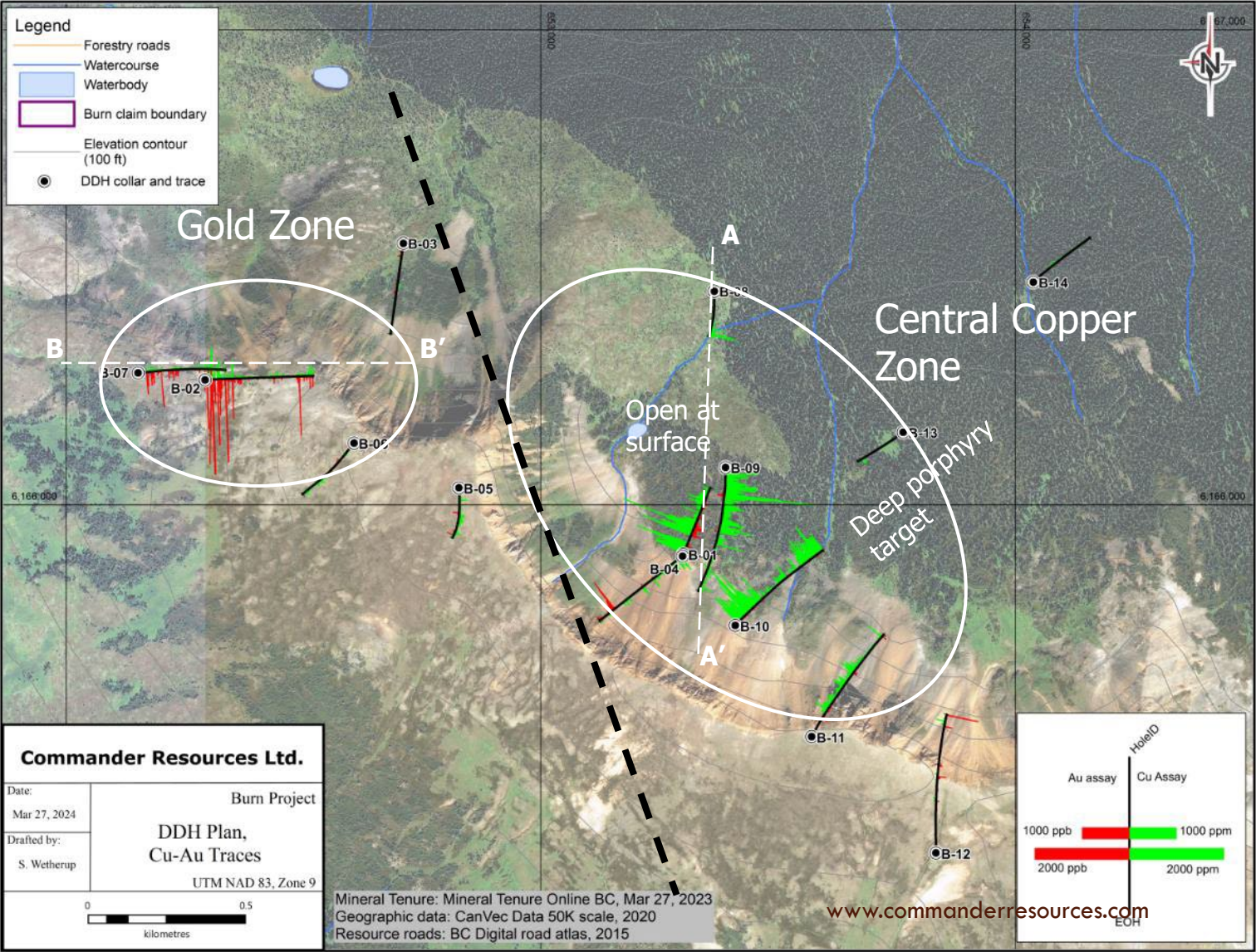


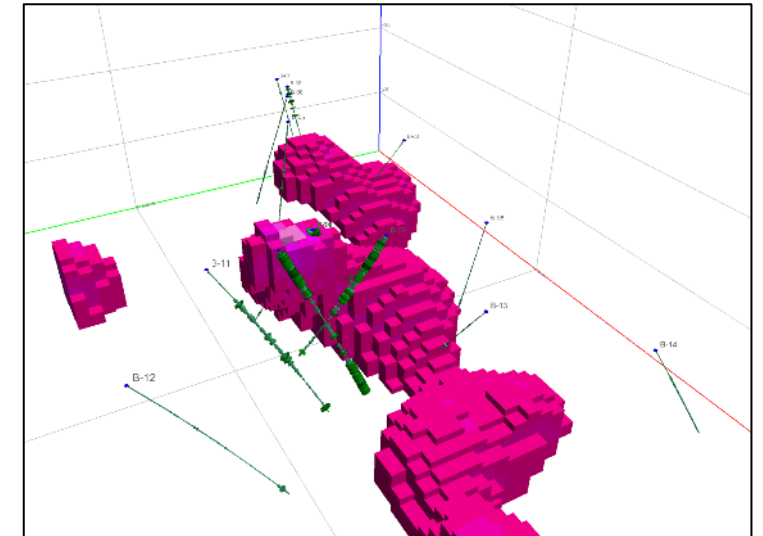
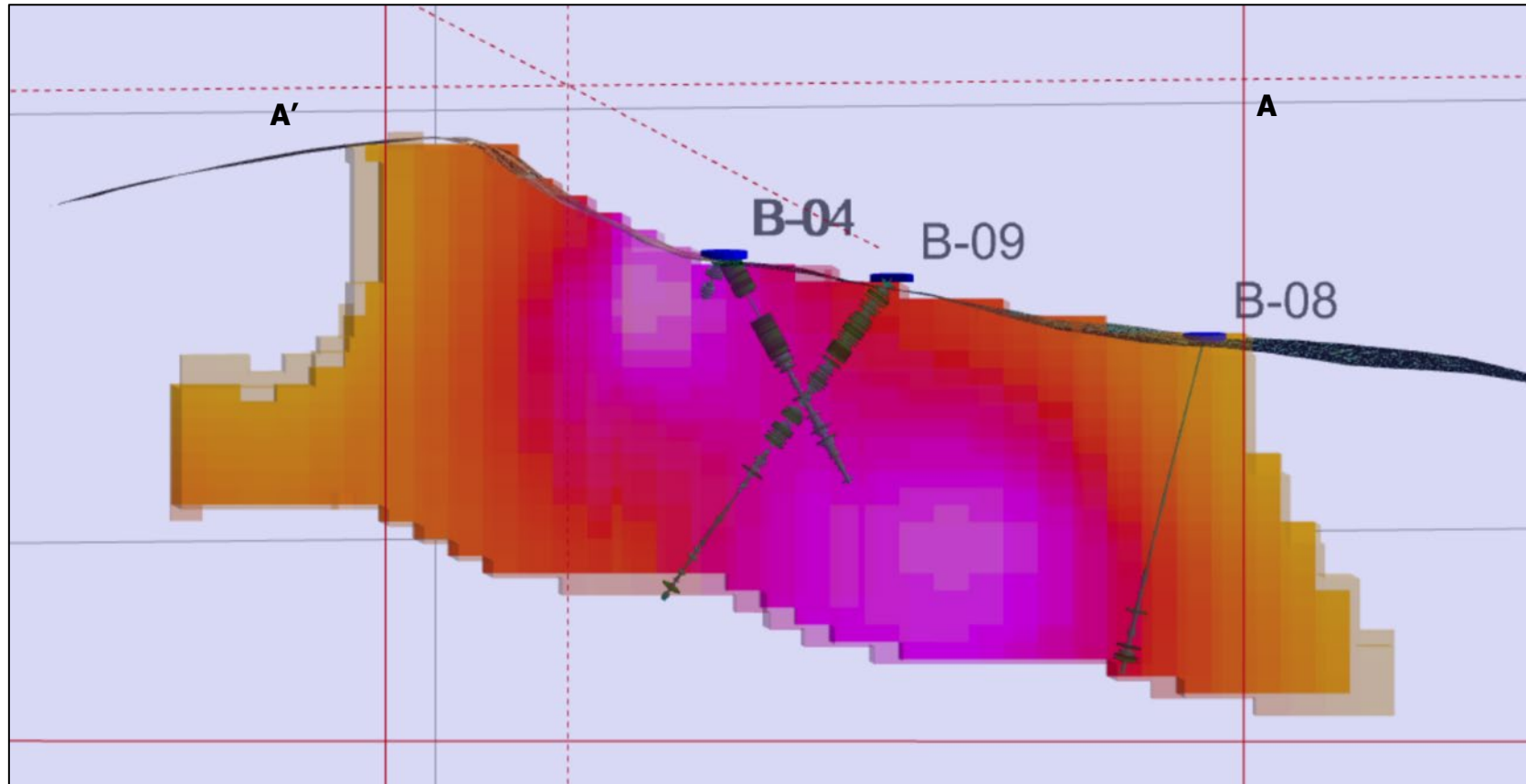
CHARLESTON TARGET: CHARGEABILITY

@ 200 m depth slice



CHARLESTON TARGET: DRILLING



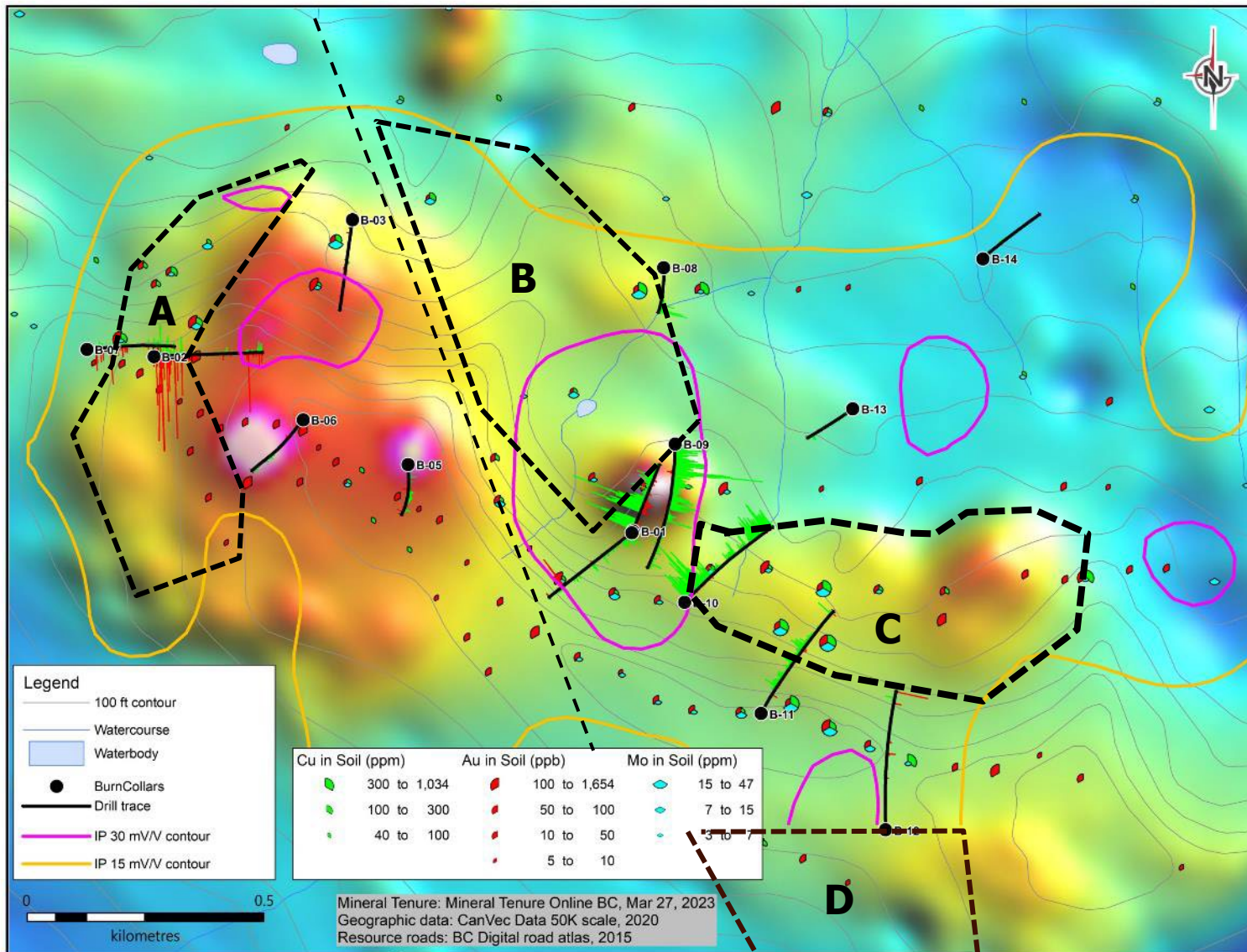


CHARLESTON TARGET: TMI/IP TARGETS



Targets

- A. Moderate IP on flank of Magnetic high feature, stepout drilling north and south of hole B2 and B7
- B. Northwest extension of copper/gold zone encountered in hole B1 and B9. Moderate IP response. Deep test beneath hole B1
- C. Large untested magnetic high with moderate IP
- D. Southern extension of IP off the current survey







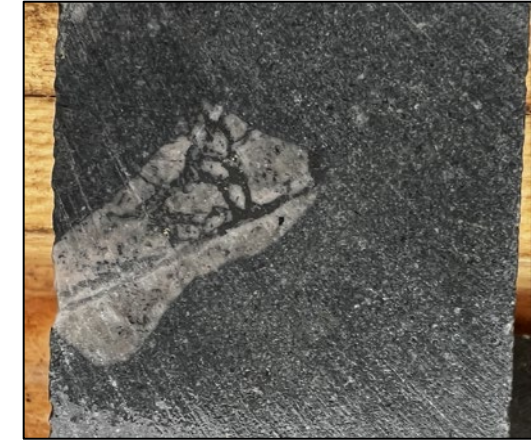
DDH B8:239 m

Entrained fragments indicate strong stockworks at depth

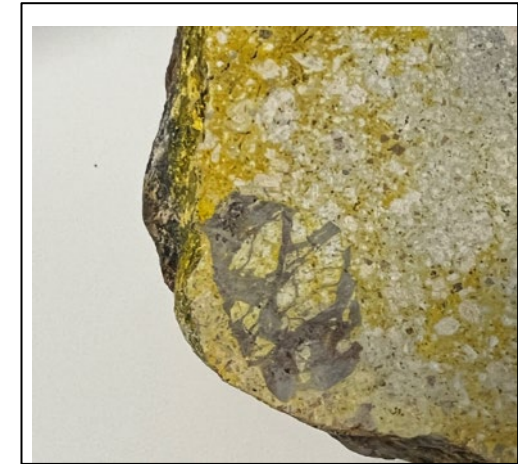


DDH B10: 60 m

Chalcopyrite and magnetite



DDH B10: 251 m





Pyrite stockworks



Pyrite stockworks



Orange vanadium zeolite
gold rich

CHARLESTON TARGET: GOLD ZONE

Enduro





Pyrrhotite-chalcopyrite



Iron carbonate



Sphalerite-chalcopyrite



Extensive deeply weathered phyllic-altered BFP



Magnetic, phyllic-altered sediments cut by diorite and BFP dyke



Poorly expose phyllic-altered
BFP pyrite

For more information:

ENDURO METALS CORP.

11th Floor, 1111 Melville Street, Vancouver, BC V6E 3V6

Robert Cameron: 778-989-1501

cameron@endurometals.com

