

Enduro

METALS CORP

Newmont Lake

*688 km² Land Package In the Heart
of The Golden Triangle*

Forward Looking Statement

Certain statements contained in this presentation constitute forward-looking statements. These statements relate to future events or the Corporation's future performance, business prospects or opportunities. All statements other than statements of historical fact may be forward-looking statements. Forward-looking statements are often, but not always, identified by the use of words such as "seek", "anticipate", "plan", "continue", "estimate", "expect", "may", "will", "project", "predict", "potential", "targeting", "intend", "could", "might", "should", "believe" and similar expressions. These statements involve known and unknown risks, uncertainties and other factors that may cause actual results or events to differ materially from those anticipated in such forward-looking statements. The Corporation believes that the expectations reflected in those forward-looking statements are reasonable, but no assurance can be given that these expectations will prove to be correct and such forward-looking statements should not be unduly relied upon. These statements speak only as of the date specified. The Corporation does not intend, and does not assume any obligation, to update these forward-looking statements.

These forward-looking statements involve risks and uncertainties relating to, among other things, results of exploration activities, the Corporation's limited experience with development-stage mining operations, uninsured risks, regulatory changes, defects in title, availability of materials and equipment, timeliness of government approvals, changes in commodity and, particularly, gold prices, actual performance of facilities, equipment and processes relative to specifications and expectations and anticipated environmental impacts on operations. Actual results may differ materially from those expressed or implied by such forward-looking statements.

Qualified Person

The technical information with the Company's website and presentations have been reviewed and approved by Mr. Maurizio Napoli, P. Geo., a Director of Enduro Metals, a Qualified Person as defined by NI 43-101 standards, responsible for the scientific and technical information contained herein. The Qualified Person has not completed sufficient work to verify all historic information on the Property. During a site inspection of the Newmont Lake Project, historic drill core was inspected by the Qualified Person from certain drill holes drilled between 2007-2008. Core from these select drill holes was confirmed to be complete, and the original collar locations were verified by a Differential Global Positioning System. Measurements at each site confirmed the orientation information for the select historic drill holes which have been part of an on-going analysis program to identify mineralization in the historic drill core which was not previously sampled. The Qualified Person believes that drilling and analytical results were completed to industry standard practices at the time of completion. Historic drill holes completed prior to 2006 could not be definitively verified due to weathering and degradation of drill core, core boxes, and core/casing collar labels. The information provides information of the exploration potential on the Property but may not be representative of expected mineralization. More drilling is needed to test for mineralization in areas thought to be mineralized based on historic information.

Watch for regular contributions (Instagram, Facebook, Twitter and LinkedIn) from award-winning photographer & explorationist **Anatole Tuzlak**

"Trying to explain to people how mineral exploration works can be a very challenging task and often leaves people puzzled or confused. Through photography, my goal is to capture day-to-day life on what it takes to operate a successful exploration season, with the highest quality standards in mind. To have an opportunity to document such an exciting project is an honour and I can't wait to see how the Newmont Lake story in the amazing Golden Triangle continues to unfold."

Anatole Tuzlak
Explorationist & Photographer



Leadership

Cole Evans - CEO | Dylan Hunko - COO

Founders of HEG & Associates Exploration Services Inc. which they grew into one of Western Canada's largest exploration services companies, focusing on British Columbia's Golden Triangle and South-Central Regions.

Mr. Evans holds a B.Sc. (Hons) in Geology from the University of British Columbia Okanagan specializing in applications of hyperspectral analysis and applied geochemistry from the Charles Fipke Centre for Innovative Research. He prides himself as being a strategical, business minded geologist with a track record for exponential growth of his private sector business endeavors.

Mr. Hunko is a skilled project manager who has designed and executed projects for junior explorers and major mining companies alike in North America. Mr. Hunko started his exploration career with Archer Cathro in 2011 and has worked as an exploration geologist for several companies dominantly focused on the Golden Triangle of British Columbia, Canada.

They are the second largest shareholders in the Company having invested \$3 million CAD to date



Leadership



Cole Evans
CEO, Director



Lawrence Roulston
Director
40 years experience; resource advisor and mining professional



Maurizio Napoli P.Geo
Director
38 years experience in exploration and exploration management



Dylan Hunko
COO



Terence Ortslan P.Eng
Advisor to the CEO
Mining consultant and independent director



John Ryan
Technical Advisor
20 years experience; greenfields and brownfields exploration geoscientist



Will Slack
President
Mining corporate financier with a long history of advising junior resources companies



Susanne A. Hermans
Director
25 years experience; Certified Public & Chartered Global Management Accountant



Deborah Cotter
Corporate Secretary
30 years experience; corporate secretary and governance professional



David Watkins
Director
50 years of global mineral exploration, discovery, management, and financing



Malcolm Davidson CPA
CFO
20 years experience; Chartered Professional Accountant for listed mining companies



Ali Wasiliew P.Geo
Senior Geologist / Communications
Professional geoscientist and geocommunication specialist

Corporate Information

\$8,460,000
Market Capitalization

\$0.30
Current Share
Price

ENDR
LISTED
TSXV

ENDMF
OTCQB

SOG
BÖRSE
FRANKFURT

28,500 Canada **4,270** USA
Avg. Volume per day

28,192,629
Shares Outstanding

2,462,000
Options Outstanding

4,272,837
Warrants Outstanding

35,227,466
Fully Diluted April, 2024

300,000
Restricted Share Units



First Nations / Sustainability



Tahltan Nation Relationships

Enduro has a strong focus on indigenous and community engagements. A key commitment is to continue to work closely with BC's Tahltan Nation, on whose territory the property is located.

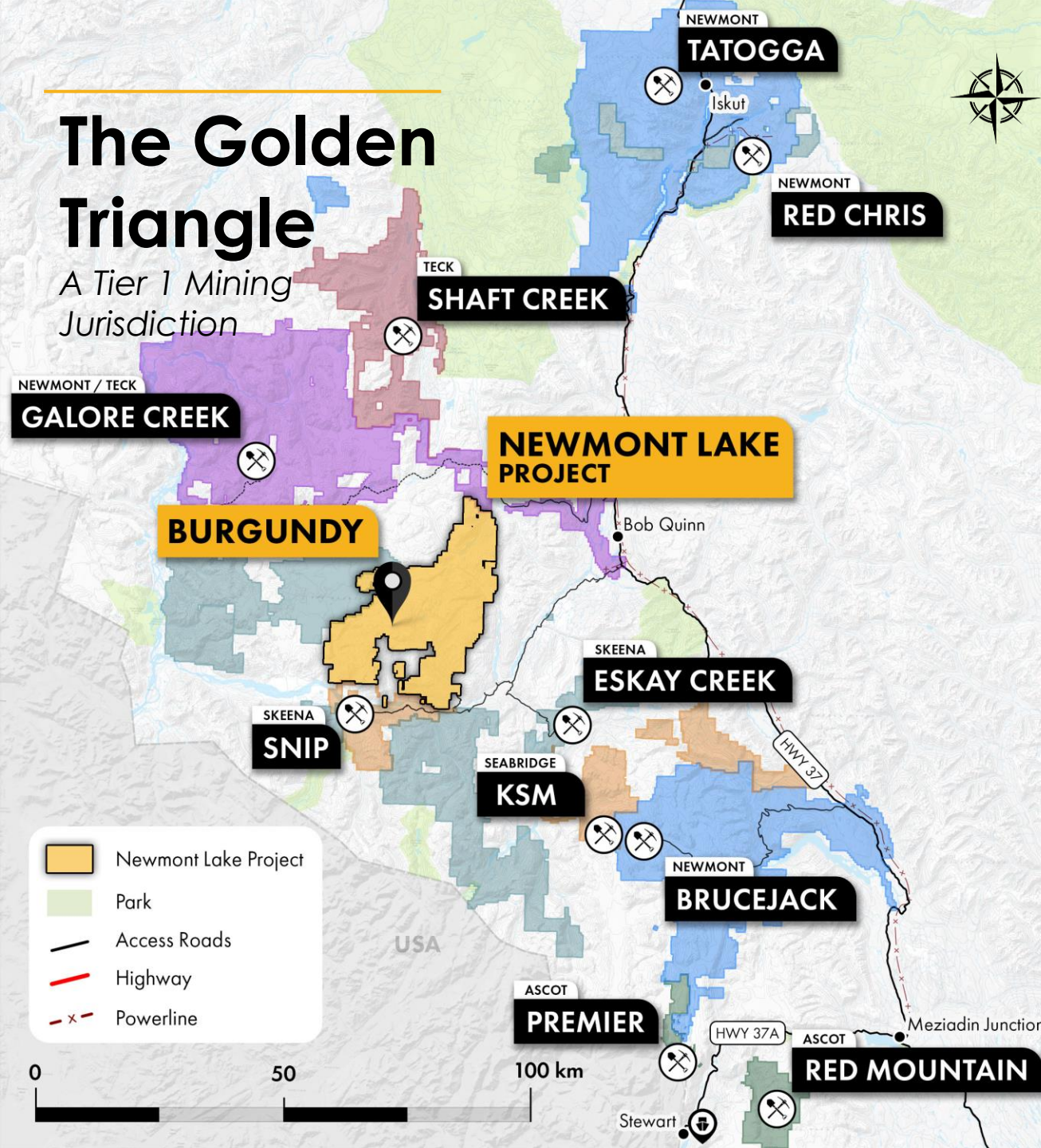


Environmental Stewardship

Enduro is proud to live and work in beautiful British Columbia. Our commitment to exploring and developing the Newmont Lake Project in an environmentally responsible manner is one of our core values as a junior explorer.

The Golden Triangle

A Tier 1 Mining Jurisdiction



Red Chris

70% interest acquired by Newcrest in 2019 for \$1.1 billion CAD.

Brucejack

Newcrest acquired the Brucejack Mine in 2022 for \$3.5 billion CAD. It is one of the highest-grade operating Au mines in the world.

KSM – Treaty Creek

World's largest undeveloped gold project held by Seabridge Gold and Tudor Gold.

Galore Creek

One of the largest undeveloped copper/gold projects in the world, 50/50 JV between Teck and Newmont.

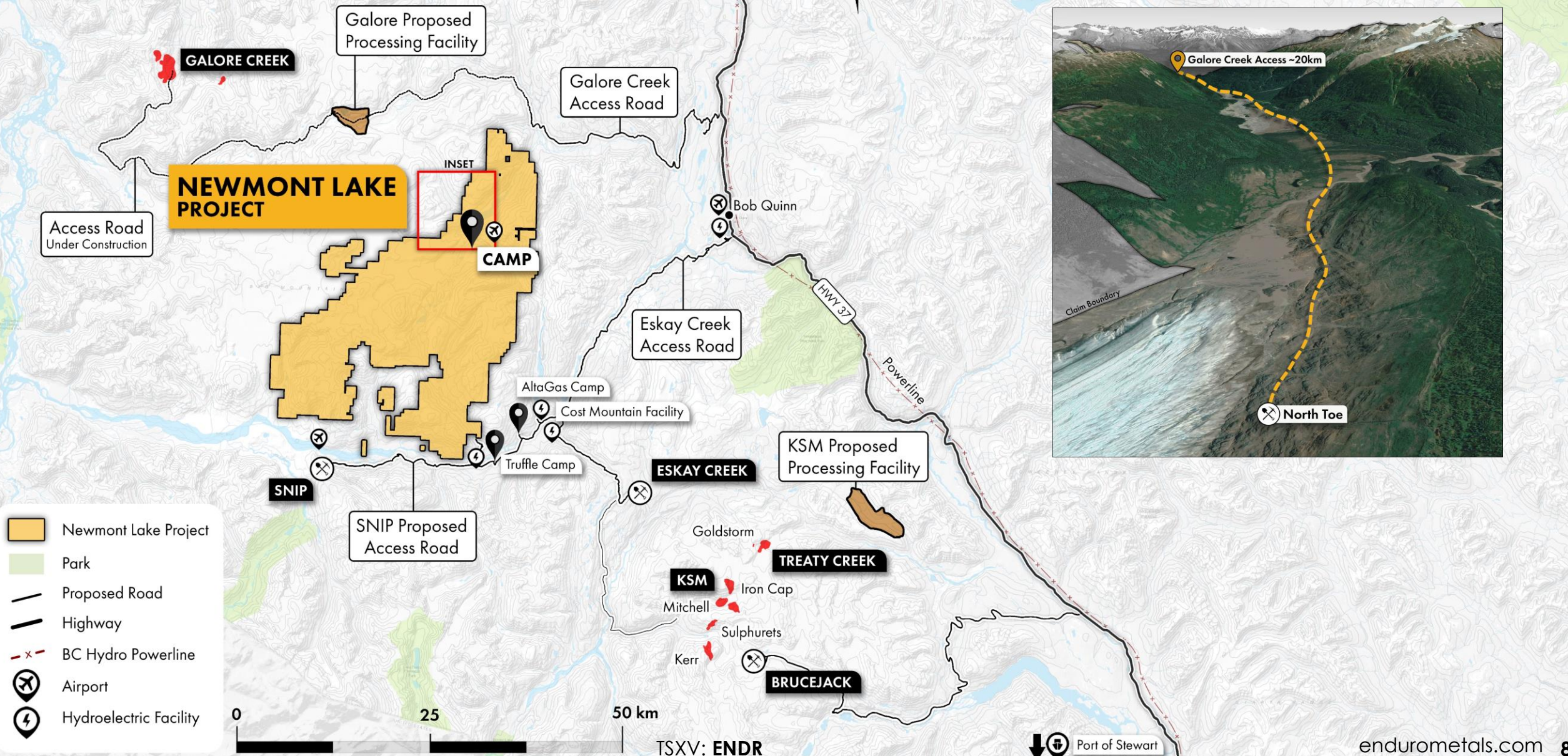
Eskay Creek

Highest grade gold mine in the world when in production. Now being advanced to the permitting process ahead of production by Skeena.

Snip

Produced 1 million ounces of Au from 1991-1999 at 27.5 g/t.

Newmont Lake Infrastructure



- Newmont Lake Project
- Park
- Proposed Road
- Highway
- BC Hydro Powerline
- Airport
- Hydroelectric Facility

Newmont Lake

Property Overview

1. Copper Line

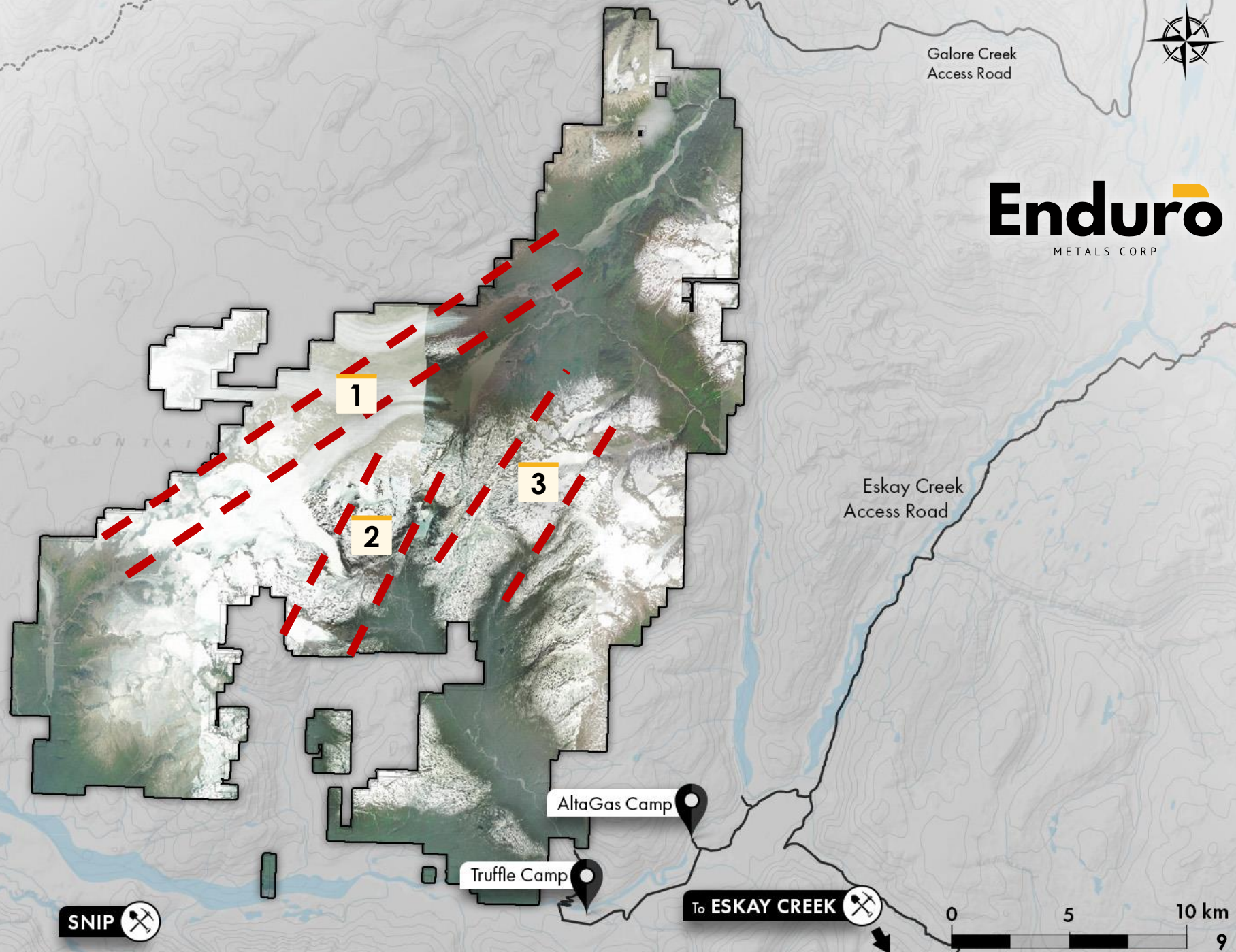
Burgundy: Copper-gold porphyry
North Toe: Copper-gold porphyry

2. McLymont Gold Line

Northwest Zone: High grade gold
McLymont West: High grade gold
Ken Zone: Copper-gold-iron skarn

3. Chachi

9km x 4km multi-element
geochemical anomaly



Galore Creek
Access Road

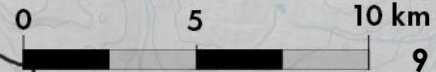
Enduro
METALS CORP

Eskay Creek
Access Road

AltaGas Camp

Truffle Camp

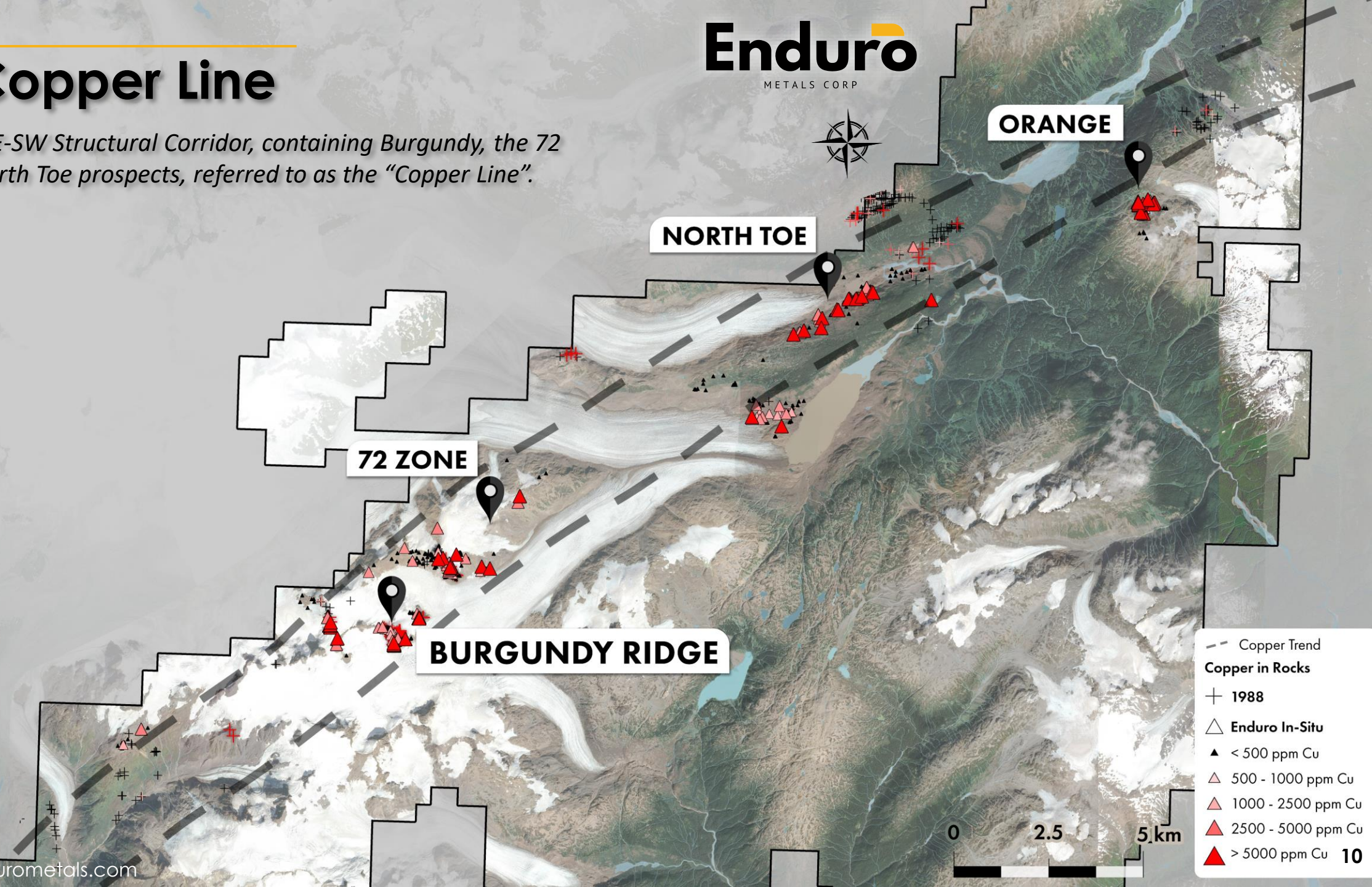
To ESKAY CREEK



SNIP

The Copper Line

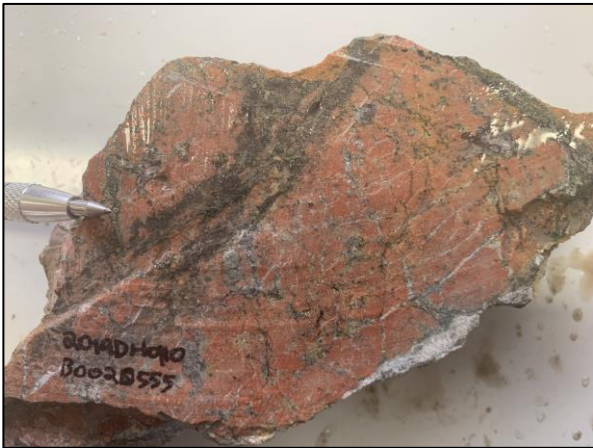
The 20km NE-SW Structural Corridor, containing Burgundy, the 72 Zone and North Toe prospects, referred to as the "Copper Line".



Burgundy Discovery

First-Ever Channel/Trench Sample at Burgundy in 2019

- **1.31% Copper, 2.97% Zinc, 1.49 g/t Gold, and 23.26 g/t Silver over 37.00 metres at surface**
 - Including, 2.00% Copper, 4.69% Zinc, 2.27 g/t Gold, and 34.26 g/t Silver over 22.00 metres at surface
 - Including, 3.29% Copper, 8.59% Zinc, 3.75 g/t Gold, and 63.39 g/t Silver on surface over 10.00 metres on surface



0.47% Cu, 0.54 g/t Au, and
7.42 g/t Ag over 1.00m



4.14% Cu, 15.15% Zn, 4.56 g/t Au,
and 103 g/t Ag over 1.00m

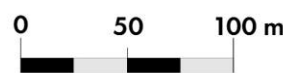
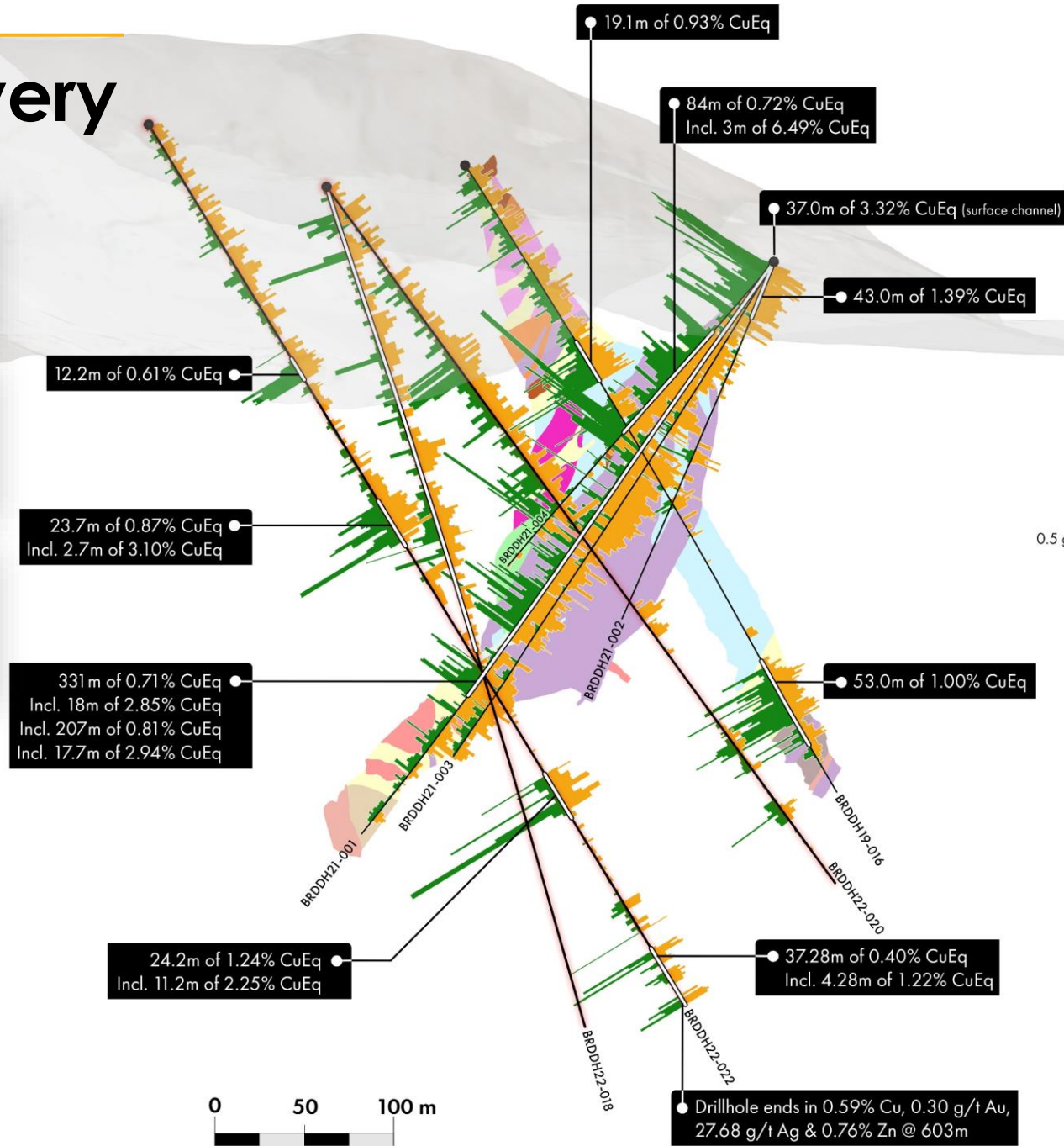
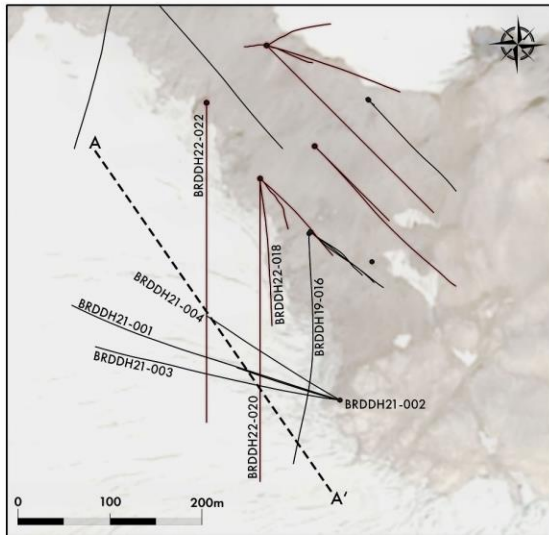


Burgundy Discovery

Discovery hole: 331m of 0.71 CuEq, including 18m of 2.85% CuEq

14,500m drilled to date with mineralization defined over a 2.3km strike length

Deepest hole ends in 0.59% Cu, 0.30 g/t Au, 27.68 g/t Ag, and 0.76% Zn at 603m



NW

SE

+1800 m

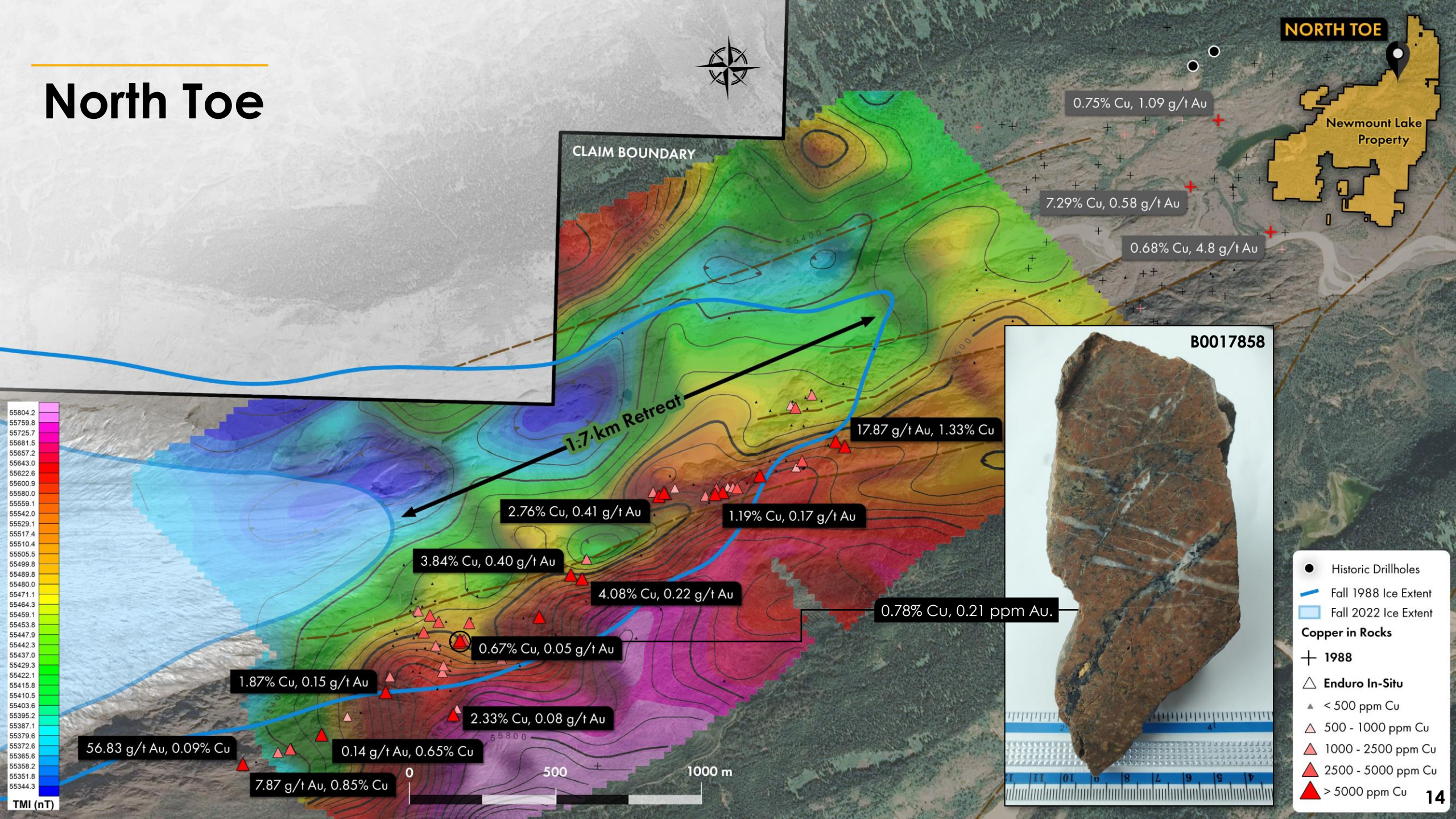
+1650 m

+1500 m

+1350 m

12

North Toe

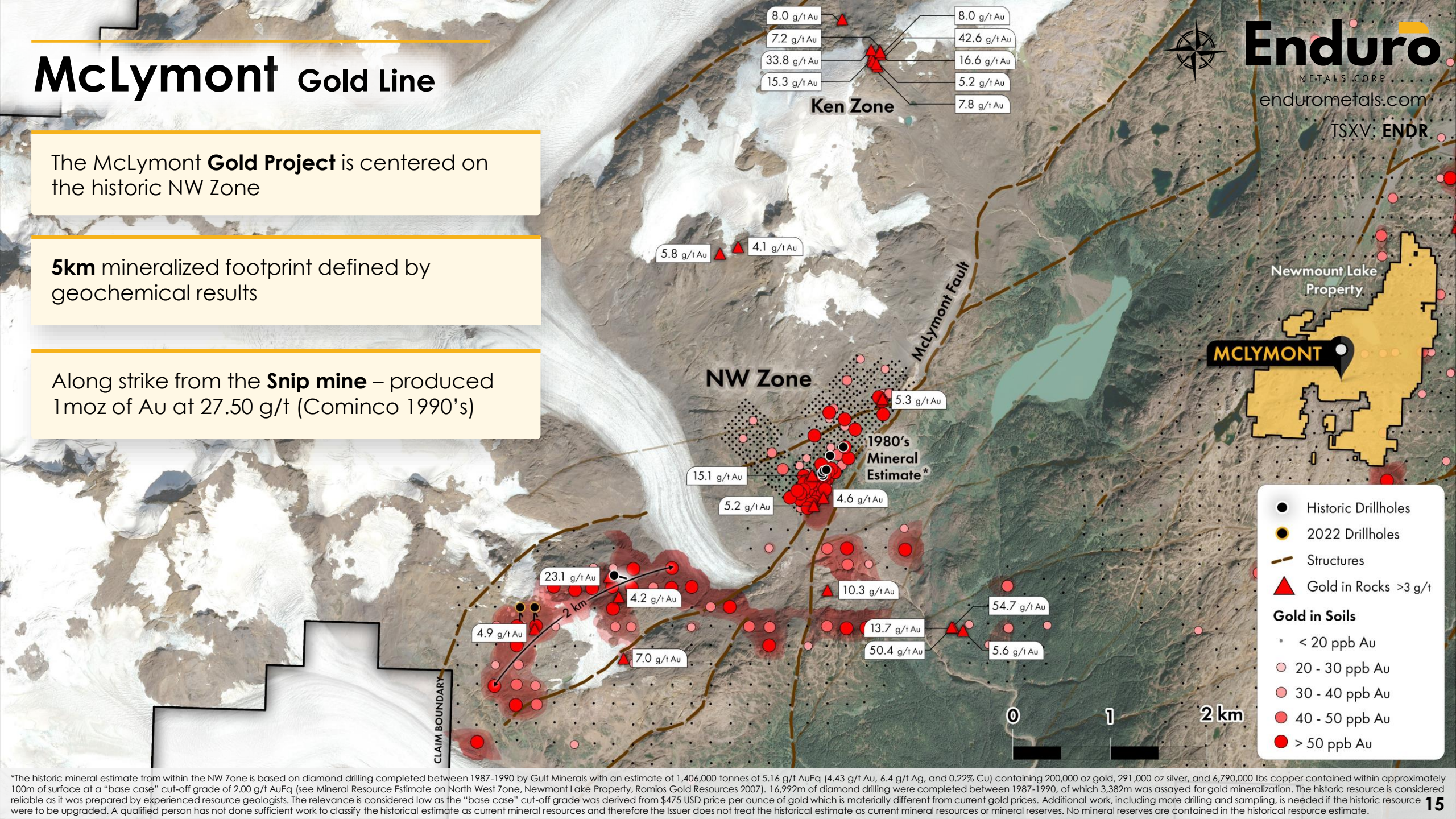


McLymont Gold Line

The McLymont **Gold Project** is centered on the historic NW Zone

5km mineralized footprint defined by geochemical results

Along strike from the **Snip mine** – produced 1moz of Au at 27.50 g/t (Cominco 1990's)



- Historic Drillholes
- 2022 Drillholes
- Structures
- ▲ Gold in Rocks >3 g/t
- Gold in Soils**
- < 20 ppb Au
- 20 - 30 ppb Au
- 30 - 40 ppb Au
- 40 - 50 ppb Au
- > 50 ppb Au

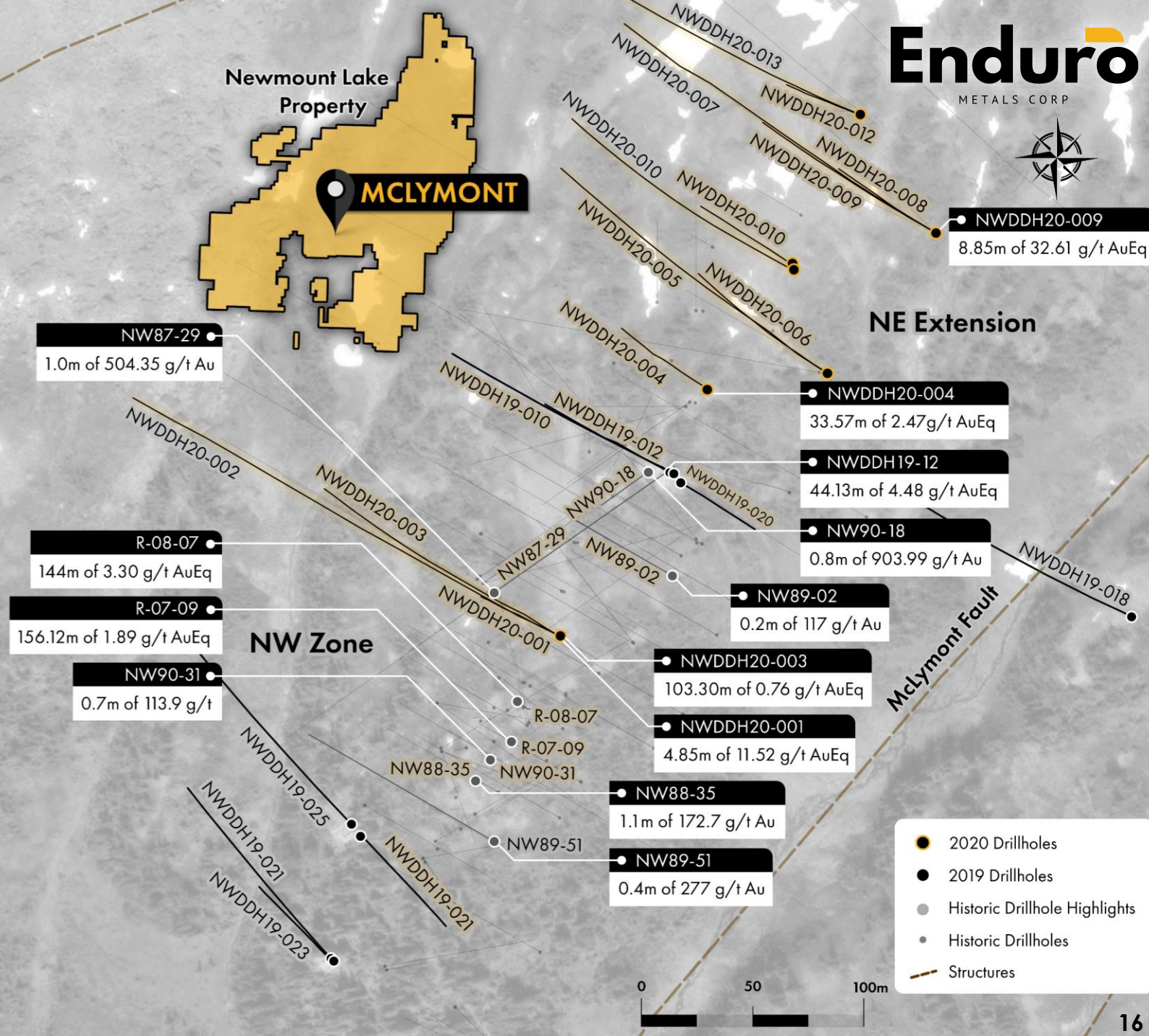
*The historic mineral estimate from within the NW Zone is based on diamond drilling completed between 1987-1990 by Gulf Minerals with an estimate of 1,406,000 tonnes of 5.16 g/t AuEq (4.43 g/t Au, 6.4 g/t Ag, and 0.22% Cu) containing 200,000 oz gold, 291,000 oz silver, and 6,790,000 lbs copper contained within approximately 100m of surface at a "base case" cut-off grade of 2.00 g/t AuEq (see Mineral Resource Estimate on North West Zone, Newmont Lake Property, Romios Gold Resources 2007). 16,992m of diamond drilling were completed between 1987-1990, of which 3,382m was assayed for gold mineralization. The historic resource is considered reliable as it was prepared by experienced resource geologists. The relevance is considered low as the "base case" cut-off grade was derived from \$475 USD price per ounce of gold which is materially different from current gold prices. Additional work, including more drilling and sampling, is needed if the historic resource were to be upgraded. A qualified person has not done sufficient work to classify the historical estimate as current mineral resources and therefore the Issuer does not treat the historical estimate as current mineral resources or mineral reserves. No mineral reserves are contained in the historical resource estimate.

McLymont Gold Line



Drilling Highlights

Hole ID	From (m)	To (m)	Interval (m)	Au (g/t)	Ag (g/t)	Cu (%)	AuEq (g/t)
NW21-03	124.20 124.30	270.00 197.36	150.80 75.01	0.62 0.85	0.28 0.33	0.06 0.08	0.73 1.00
R-07-09	6.86	165.40	156.12	1.72	2.60	0.10	1.89
	6.86	93.15	86.29	3.00	4.53	0.16	3.27
	15.24	16.76	1.52	29.60	11.40	0.36	30.22
	26.61	28.96	2.35	27.28	9.95	0.46	28.02
R-08-07 (uncut)	9.51	153.51	144.00	3.18	3.66	0.06	3.30
	20.01	75.71	55.70	7.51	8.82	0.08	7.72
	25.25	25.69	0.44	753.00	460.00	0.69	759.40
	75.71	153.51	78.94	0.49	0.32	0.04	0.55
NW20-01	30.20	176.50	146.30	0.50	0.97	0.07	0.61
	68.15	73.00	4.85	10.35	15.93	0.73	11.52
	70.28	73.00	2.72	17.15	26.19	1.18	19.05
NW20-02 (Vectored out of zone)	8.39	54.80	46.41	0.36	2.68	0.07	0.49
	15.00	15.50	0.50	13.85	27.89	1.21	15.81
NW20-03	15.54	198.06	182.52	0.53	1.06	0.04	0.60
	15.54	118.84	103.30	0.70	0.76	0.04	0.76
	55.07	56.07	1.00	20.75	4.34	0.46	
NW19-12	67.00	255.00	188.00	1.10	1.15	0.09	1.23
	82.00	126.13	44.13	4.04	4.06	0.29	4.48
	111.35	112.35	1.00	76.56	11.54	0.47	77.33
NW19-17	80.24	81.74	1.50	9.33	16.29	0.82	10.63
	189.00	207.31	18.31	1.80	0.37	0.04	1.86
NW20-04	43.80	276.70	232.90	0.46	1.63	0.05	0.55
	115.60	254.22	138.62	0.70	1.21	0.08	0.82
	119.83	153.40	33.57	2.10	4.05	0.25	2.47
	119.83	120.33	0.50	54.59	135.00	0.18	57.78
NW20-09	144.12	172.46	28.34	10.03	2.31	0.36	10.54
	159.88	168.73	8.85	31.09	6.54	1.07	32.61
	162.45	163.04	0.59	225.30	25.81	4.90	232.20

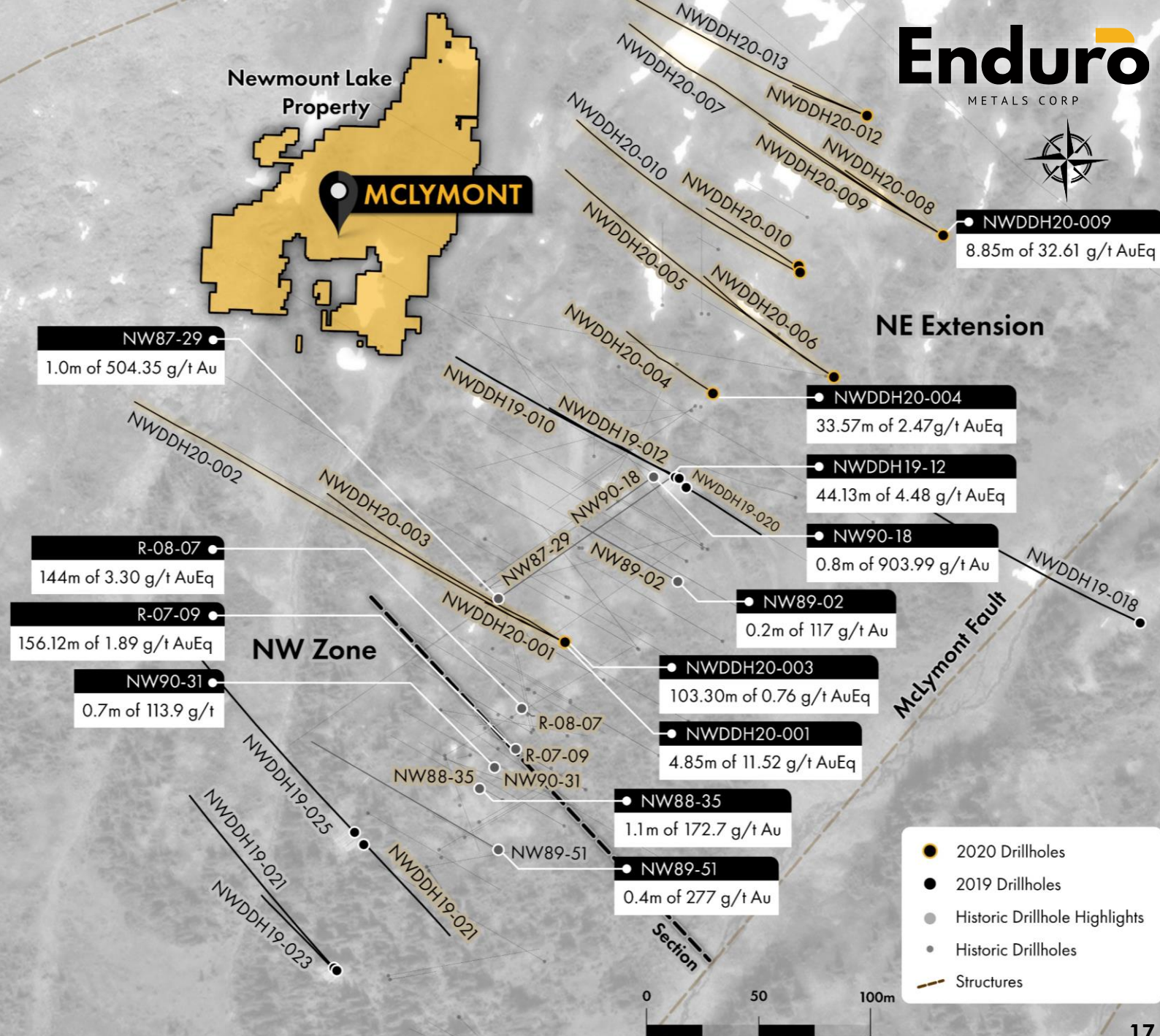
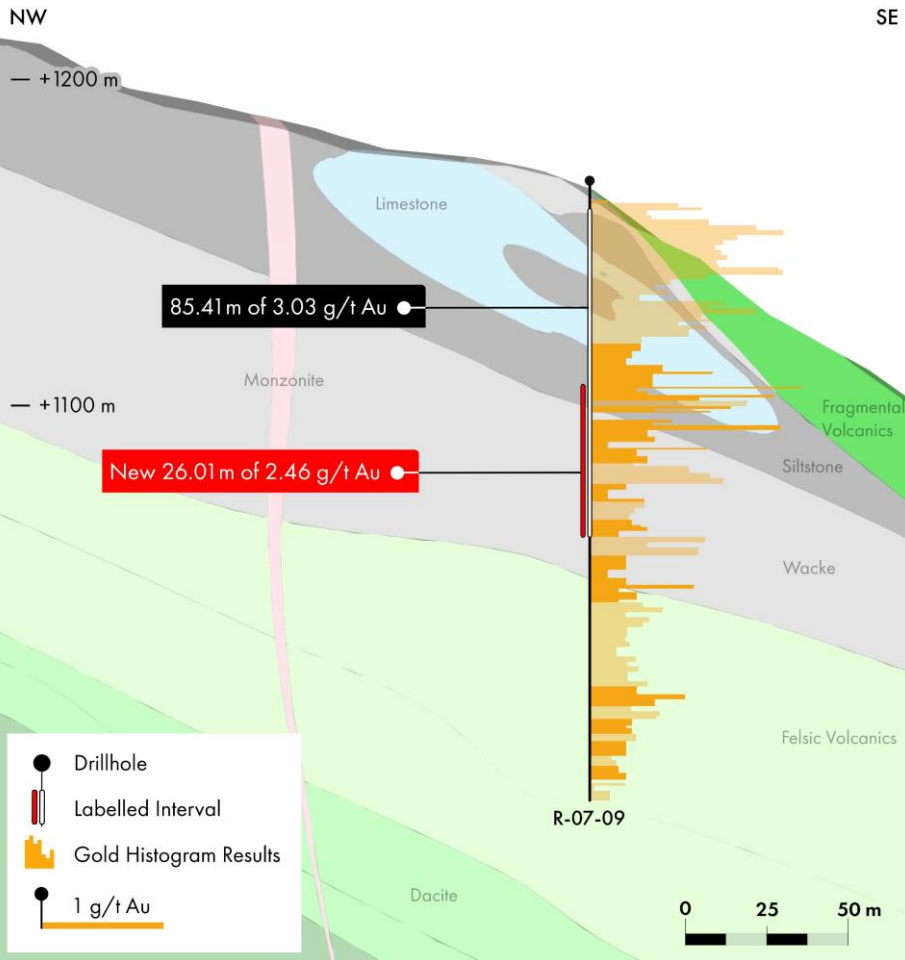


McLymont Gold Line



Section

MyClymont NW Zone
R - 07 - 09 Section



- 2020 Drillholes
- 2019 Drillholes
- Historic Drillhole Highlights
- Historic Drillholes
- Structures

Chachi

District Scale Potential

The largest geochemical anomaly with a surface footprint of 9km x 4km

Airborne Magnetic Survey data display textbook porphyry signature

- Historic Drillholes
 - Structures
- Copper in Rocks**
- ▲ < 500 ppm Cu
 - △ 500 - 1000 ppm Cu
 - △ 1000 - 2500 ppm Cu
 - △ 2500 - 5000 ppm Cu
 - ▲ > 5000 ppm Cu
- Copper in Soils**
- < 100 ppm Cu
 - 100 - 150 ppm Cu
 - 150 - 200 ppm Cu
 - 200 - 300 ppm Cu
 - > 300 ppm Cu

0 1 2 km

3.0% Cu Rock

6.6% Cu Rock

CHACHI

4.6% Cu Rock

4.1% Cu Rock

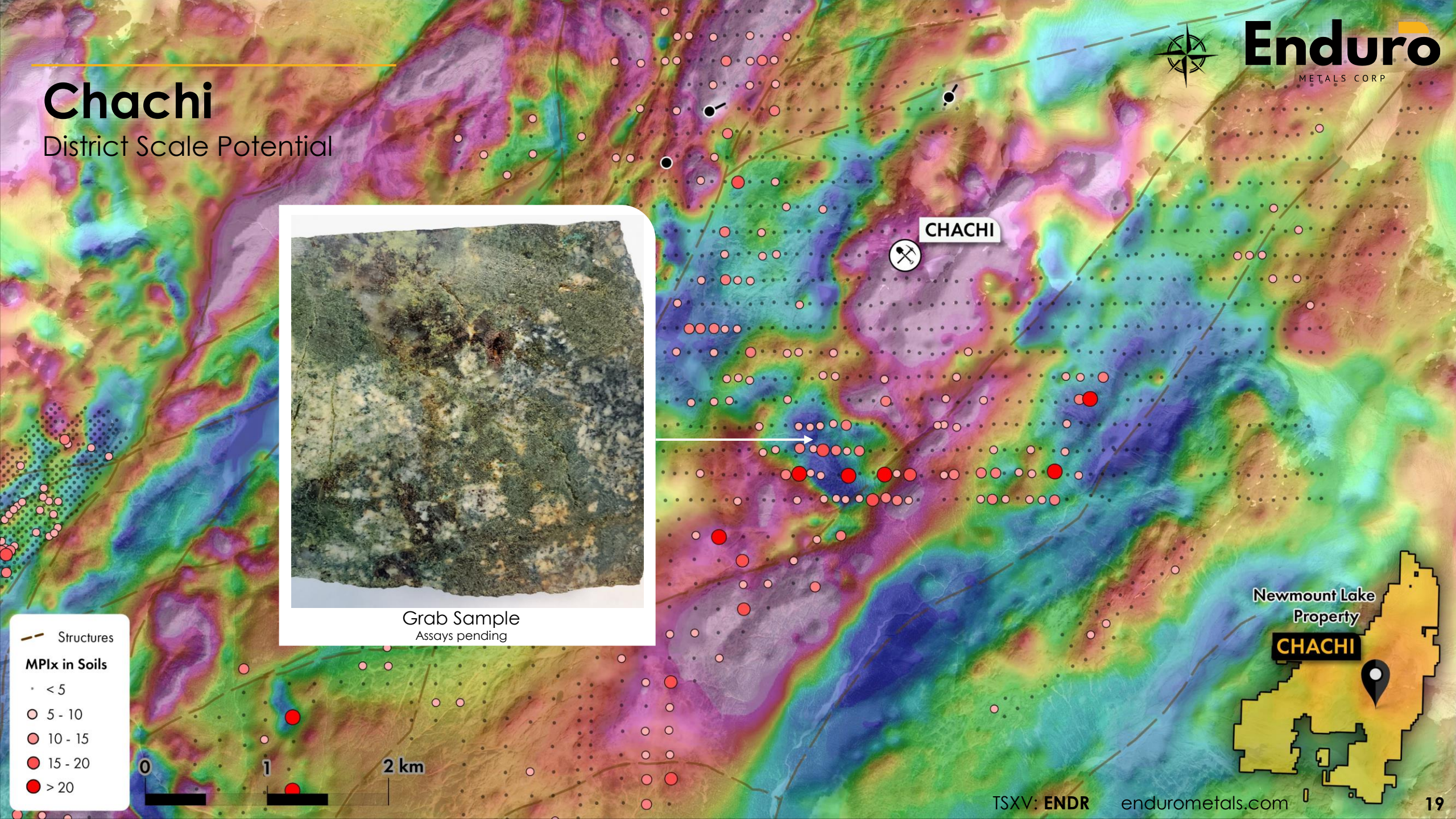
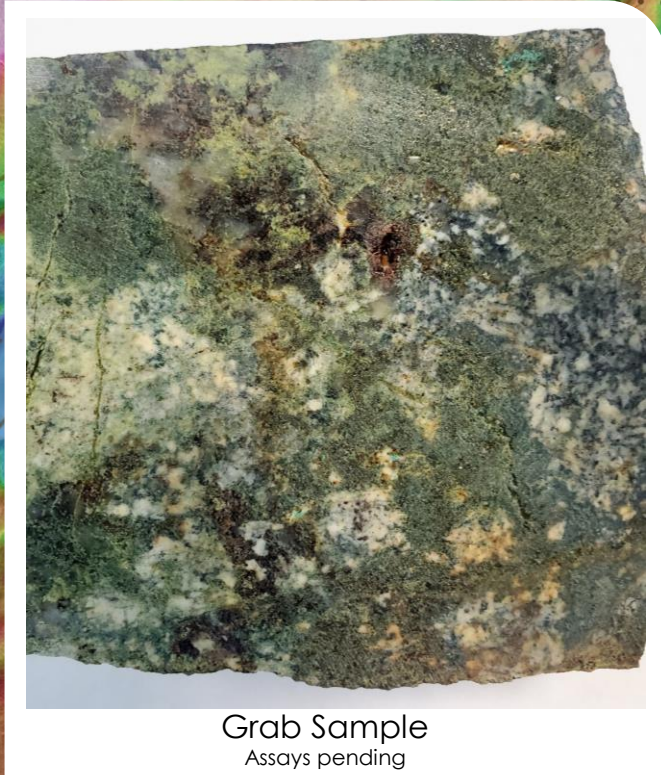


Grab Sample



Chachi

District Scale Potential



- Structures
- MPIx in Soils**
- < 5
- 5 - 10
- 10 - 15
- 15 - 20
- > 20



Appendices



Burgundy Ridge

Drill Results

Hole ID	Intercept m	Cu %	Au g/t	Zn %	Ag g/t	CuEq %	From
BRDDH19-001	179.00	0.17	0.10	-	2.00	0.25	21.00
BRDDH19-002	91.26	0.38	0.30	-	4.12	0.58	36.67
BRDDH19-004	43.15	0.16	0.12	-	2.98	0.26	215.05
	18.00	0.28	0.16	-	2.76	0.40	294.00
	6.56	0.40	0.20	-	6.55	0.54	368.44
	23.00	0.07	0.41	-	1.63	0.34	415.00
BRDDH19-009	1.50	-	15.05	-	4.13	-	149.00
BRDH19-011	8.00	1.17	0.02	-	10.20	1.21	261.00
BRDH19-013	184.67	0.21	0.14	0.17	3.70	0.32	0.00
BRDH19-014	83.59	0.29	0.14	0.18	4.58	0.40	42.00
BRDH19-015	124.69	0.12	0.08	0.09	2.61	0.19	6.00
BRDH19-016	170.76	0.15	0.12	0.05	2.90	0.25	2.48
	51.38	0.46	0.17	1.22	9.98	0.59	343.66
BRDH21-001	331.43	0.29	0.35	5.50	0.49	0.71	5.47
BRDH21-02	0.50	1.32	1.50	4.11	29.1	3.62	8.66
BRDH21-003	151.30	0.21	0.26	0.13	3.9	0.50	3.00
BRDH21-004	151.3	0.27	0.21	0.13	3.5	0.47	57.70
BRDH22-05	11.46	0.14	0.08	0.02	3.24	0.22	184.62
BRDH22-06	0.58	0.88	0.46	0.09	7.59	1.24	117.45
BRDH22-08	0.59	1.40	0.76	0.19	14.75	2.02	119.37

Hole ID	Intercept m	Cu %	Au g/t	Zn %	Ag g/t	CuEq %	From m
BRDH22-010	3.00	0.37	0.28	0.07	4.84	0.59	33.00
BRDH22-011	12.93	0.12	0.08	0.006	1.20	0.18	377.63
BRDH22-012	7.04	0.42	0.11	0.03	2.89	0.52	195.00
BRDH22-013	12.24	0.48	0.17	0.04	7.30	0.61	163.02
BRDH22-015	12.78	0.005	0.65	-	0.41	0.40	586.08
BRDH22-016	25.64	0.24	0.19	-	4.89	0.38	169.66
BRDH22-017	91.00	0.23	0.08	0.14	3.47	0.35	118.00
<i>incl</i>	40.20	0.32	0.11	0.24	5.11	0.47	0.47
BRDH22-018	7.13	0.54	0.27	0.05	3.41	0.74	35.75
BRDH22-019	198.00	0.13	0.11	-	1.91	0.21	7.00
<i>incl</i>	10.45	0.61	0.14	0.30	5.47	0.84	194.55
BRDH22-020	97.93	0.21	0.16	-	3.78	0.33	120.10
<i>incl</i>	20.08	0.49	0.27	0.18	7.44	0.74	120.10
<i>incl</i>	29.00	0.33	0.23	-	4.94	0.50	182.00
BRDH22-021	14.85	0.35	0.19	0.09	5.61	0.53	187.80
BRDH22-022	12.24	0.48	0.17	0.04	7.30	0.61	163.02
BRDH22-023	6.08	1.41	0.33	0.18	19.61	1.82	253.69
BRDH22-023	40.36	0.32	0.17	0.05	3.00	0.47	163.02

STDDH19 – 006 @ 239.3 m
1.96 m of 0.97% Cu & 0.9 g/t Au

Biotite

K-spar

Cpy + Bor

Hematite Dusting feldspars

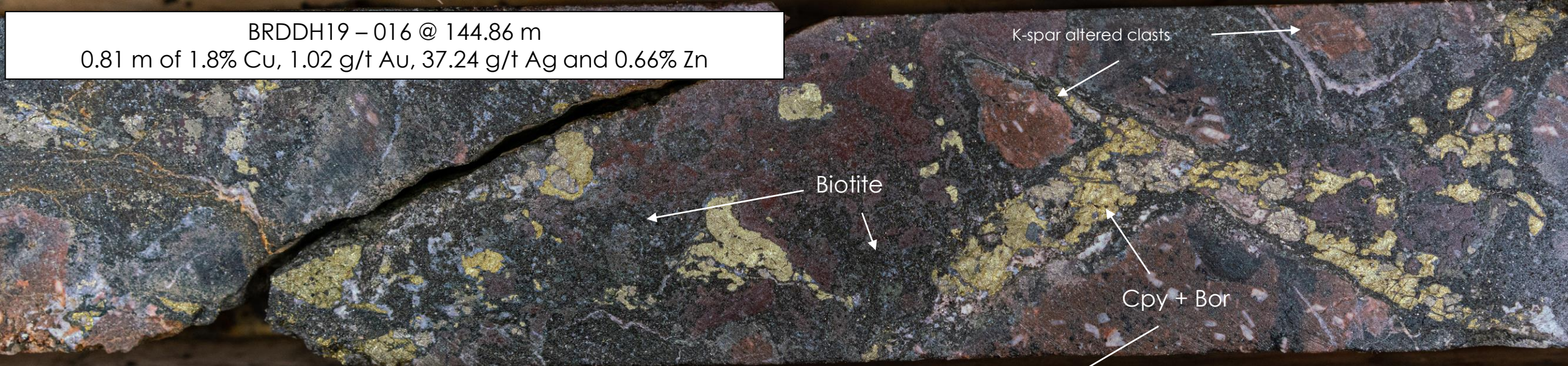
STDDH19 – 006 @ 247.08 m
2.07 m of 0.58% Cu & 0.46 g/t Au

STDDH19-006 (3rd hole at 72 Zone target) Representative core photos of porphyry-style, hypogene-mineralization within Interval:

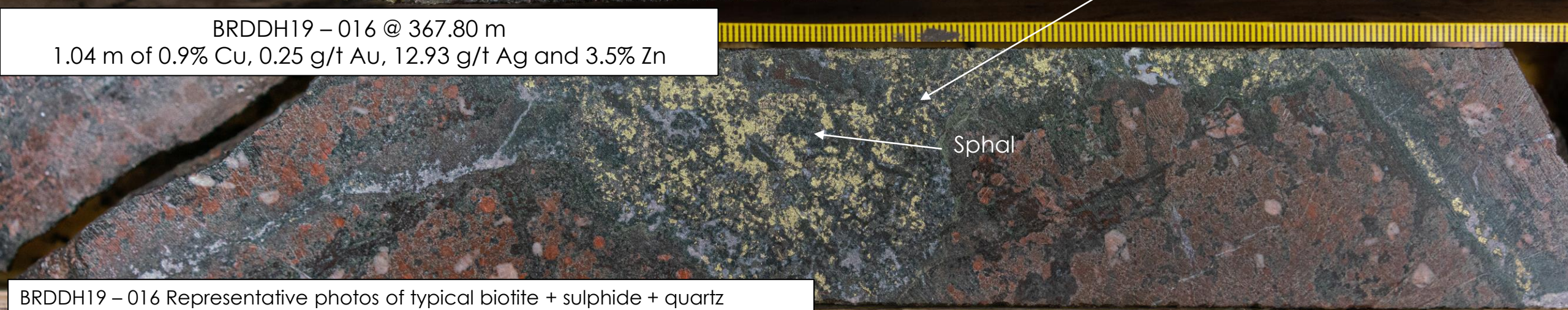
56.35m of 0.45% Cu, 0.33g/t Au and 3.44 g/t Ag starting @ 225m Including
22.28m of 0.89% Cu, 0.71g/t Au and 6.65g/t Ag

Quartz-biotite-kspar-hematite alteration is pervasive throughout interval.

BRDDH19 – 016 @ 144.86 m
0.81 m of 1.8% Cu, 1.02 g/t Au, 37.24 g/t Ag and 0.66% Zn



BRDDH19 – 016 @ 367.80 m
1.04 m of 0.9% Cu, 0.25 g/t Au, 12.93 g/t Ag and 3.5% Zn



BRDDH19 – 016 Representative photos of typical biotite + sulphide + quartz hydrothermal breccias at the Burgundy Ridge target:

51.38 m of 0.46% Cu, 1.22% Zn, 0.17 g/t Au, 9.98 g/t Ag and 0.16% Pb starting @ 343.66 m including **30.33 m of 0.64% Cu, 2.00% Zn, 0.25 g/t Au, 13.57 g/t Ag and 0.25% Pb**

Intense, black biotite alteration is prevalent throughout breccia rimming sulphide veins and breccia clasts.

BRDDH19 – 016 @ 360.44 m

0.81 m of 0.50% Cu, 0.16 g/t Au, 10.6 g/t Ag, 0.23% Pb and 2.2% Zn

Sphal

BRDDH19 – 016 @ 352.65 m

0.78 m of 1.01% Cu, 0.54 g/t Au, 11.19 g/t Ag, 0.92% Pb, and 2.69% Zn

Biotite

Cpy

BRDDH19 – 016 Representative photos of typical biotite + sulphide + quartz hydrothermal breccias at the Burgundy Ridge target:

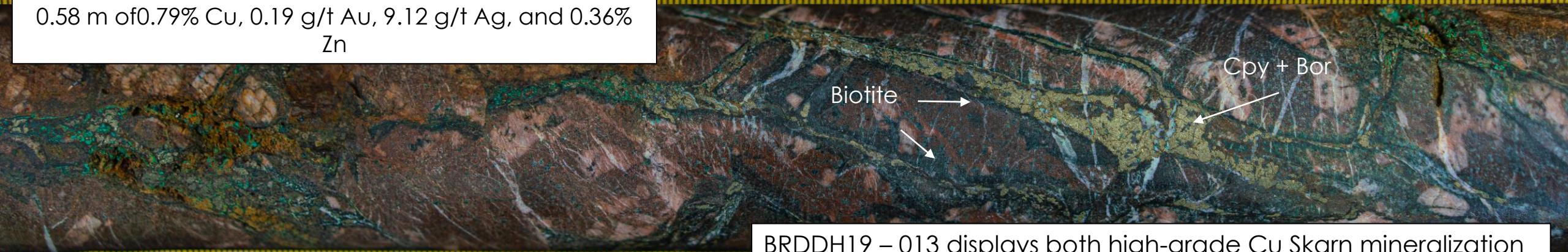
51.38 m of 0.46% Cu, 1.22% Zn, 0.17 g/t Au, 9.98 g/t Ag and 0.16% Pb starting @ 343.66 m including 30.33 m of 0.64% Cu, 2.00% Zn, 0.25 g/t Au, 13.57 g/t Ag and 0.25% Pb

BRDDH19 – 013 @ 171.94 m
0.57 m of 8.9% Cu, 0.62 g/t Au, 35.97 g/t Ag and 2.3% Zn



Massive Chalcopyrite

BRDDH19 – 013 @ 170.04 m
0.58 m of 0.79% Cu, 0.19 g/t Au, 9.12 g/t Ag, and 0.36% Zn



Biotite

Cpy + Bor

BRDDH19 – 013 displays both high-grade Cu Skarn mineralization in combination with similar hydrothermal breccia mineralization observed in previous holes at Burgundy Ridge.

Enduro

METALS CORP

CONTACT

info@endurometals.com

202-1632 Dickson Ave.
Kelowna, BC
V1Y 7T2

(236) 420 4050